

A2355

Leader in Biomolecular Solutions for Life Science



www.abclonal.com

# MonoMethyl-Histone H3-K4 Rabbit pAb

Catalog No.: A2355 **40 Publications**

## Basic Information

### Observed MW

17 kDa

### Calculated MW

15 kDa

### Category

Polyclonal Antibody

### Applications

WB,IHC-P,IF/ICC,ChIP,ChIP-seq,ELISA

### Cross-Reactivity

Human,Mouse,Rat,Other (Wide Range Predicted)

## Background

Histones are basic nuclear proteins that are responsible for the nucleosome structure of the chromosomal fiber in eukaryotes. Nucleosomes consist of approximately 146 bp of DNA wrapped around a histone octamer composed of pairs of each of the four core histones (H2A, H2B, H3, and H4). The chromatin fiber is further compacted through the interaction of a linker histone, H1, with the DNA between the nucleosomes to form higher order chromatin structures. This gene is intronless and encodes a replication-dependent histone that is a member of the histone H3 family. Transcripts from this gene lack polyA tails; instead, they contain a palindromic termination element. This gene is located separately from the other H3 genes that are in the histone gene cluster on chromosome 6p22-p21.3.

## Recommended Dilutions

**WB** 1:2000 - 1:10000

**IF/ICC** 1:50 - 1:200

**IHC-P** 1:50 - 1:200

**ChIP** 5µg antibody for  
5µg-10µg of Chromatin

**ChIP-seq** 1:20 - 1:100

**ELISA** Recommended starting concentration is 1 µg/mL. Please optimize the concentration based on your specific assay requirements.

## Immunogen Information

### Gene ID

8290/8350

### Swiss Prot

Q16695/P68431

### Immunogen

Synthetic peptide. This information is considered to be commercially sensitive.

### Synonyms

H3t; H3.4; H3/g; H3FT; H3C16; HIST3H3; MonoMethyl-Histone H3-K4

## Product Information

### Source

Rabbit

### Isotype

IgG

### Purification

Affinity purification

### Storage

Store at -20°C. Avoid freeze / thaw cycles.

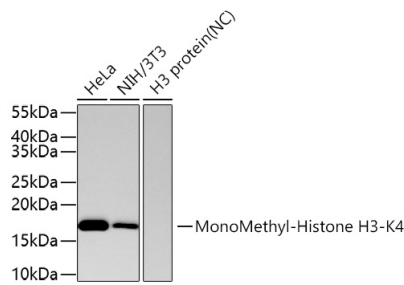
Buffer: PBS containing 50% glycerol, preserved with proclin300 or sodium azide (as specified on the Certificate of Analysis), pH 7.3.

## Contact



[www.abclonal.com](http://www.abclonal.com)

## Validation Data



Western blot analysis of various lysates using MonoMethyl-Histone H3-K4 Rabbit pAb (A2355) at 1:5000 dilution .

Secondary antibody: HRP-conjugated Goat anti-Rabbit IgG (H+L) (AS014) at 1:10000 dilution.

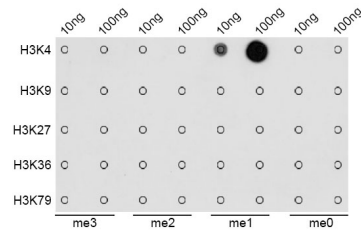
Lysates/proteins: 25 µg per lane.

Blocking buffer: 3% nonfat dry milk in TBST.

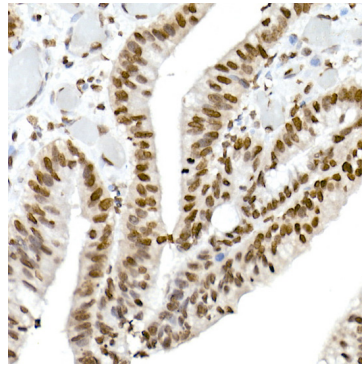
Detection: ECL Basic Kit (RM00020).

Negative control (NC): H3 protein.

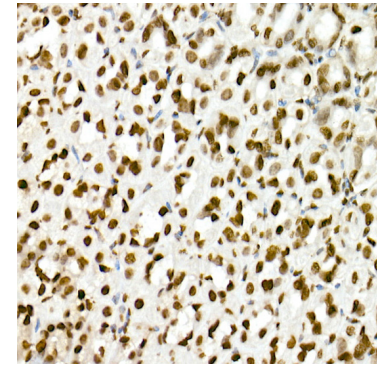
Exposure time: 90 s.



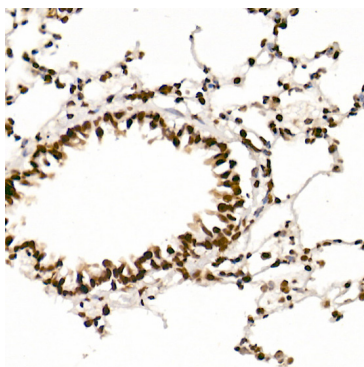
Dot-blot analysis of all sorts of methylation peptides using MonoMethyl-Histone H3-K4 antibody (A2355).



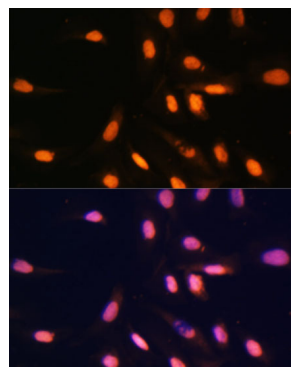
Immunohistochemistry analysis of paraffin-embedded Human colon carcinoma using MonoMethyl-Histone H3-K4 Rabbit pAb (A2355) at dilution of 1:200 (40x lens). High pressure antigen retrieval performed with 0.01M Citrate buffer (pH 6.0) prior to IHC staining.



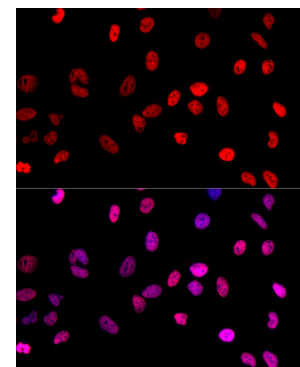
Immunohistochemistry analysis of paraffin-embedded Mouse stomach using MonoMethyl-Histone H3-K4 Rabbit pAb (A2355) at dilution of 1:200 (40x lens). High pressure antigen retrieval performed with 0.01M Citrate buffer (pH 6.0) prior to IHC staining.



Immunohistochemistry analysis of paraffin-embedded Rat lung using MonoMethyl-Histone H3-K4 Rabbit pAb (A2355) at dilution of 1:200 (40x lens). High pressure antigen retrieval performed with 0.01M Citrate buffer (pH 6.0) prior to IHC staining.



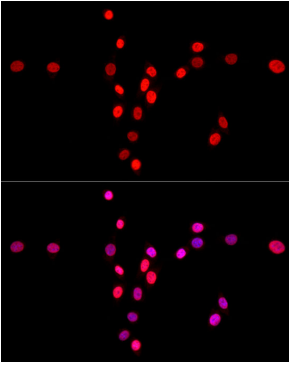
Immunofluorescence analysis of U-2 OS cells using MonoMethyl-Histone H3-K4 Rabbit pAb (A2355) at dilution of 1:100. Secondary antibody: Cy3-conjugated Goat anti-Rabbit IgG (H+L) (AS007) at 1:500 dilution. Blue: DAPI for nuclear staining.



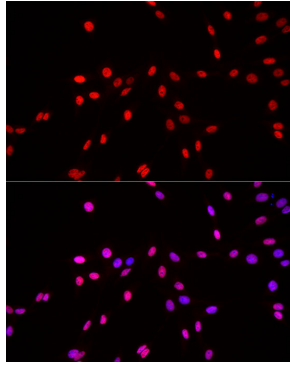
Immunofluorescence analysis of HeLa cells using MonoMethyl-Histone H3-K4 Rabbit pAb (A2355) at dilution of 1:20 (40x lens). Secondary antibody: Cy3-conjugated Goat anti-Rabbit IgG (H+L) (AS007) at 1:500 dilution. Blue: DAPI for nuclear staining.

## Validation Data

---



Immunofluorescence analysis of NIH/3T3 cells using MonoMethyl-Histone H3-K4 Rabbit pAb (A2355) at dilution of 1:20 (40x lens). Secondary antibody: Cy3-conjugated Goat anti-Rabbit IgG (H+L) (AS007) at 1:500 dilution. Blue: DAPI for nuclear staining.



Immunofluorescence analysis of PC-12 cells using MonoMethyl-Histone H3-K4 Rabbit pAb (A2355) at dilution of 1:20 (40x lens). Secondary antibody: Cy3-conjugated Goat anti-Rabbit IgG (H+L) (AS007) at 1:500 dilution. Blue: DAPI for nuclear staining.