

A23536

Leader in Biomolecular Solutions for Life Science



DEC1 Rabbit mAb

Catalog No.: A23536

Recombinant

Basic Information

Observed MW

46 kDa

Calculated MW

46 kDa

Category

SMab Recombinant Monoclonal
Antibody

Applications

WB, ELISA

Cross-Reactivity

Human

CloneNo number

ARC59676

Background

This gene encodes a basic helix-loop-helix protein expressed in various tissues. The encoded protein can interact with ARNTL or compete for E-box binding sites in the promoter of PER1 and repress CLOCK/ARNTL's transactivation of PER1. This gene is believed to be involved in the control of circadian rhythm and cell differentiation.

Recommended Dilutions

WB 1:1000 - 1:2000

ELISA Recommended starting concentration is 1 µg/mL. Please optimize the concentration based on your specific assay requirements.

Immunogen Information

Gene ID
8553

Swiss Prot
O14503

Immunogen

Recombinant protein (or fragment). This information is considered to be commercially sensitive.

Synonyms

DEC1; HLHB2; BHLHB2; Clast5; SHARP2; STRA13; Stra14; SHARP-2

Contact

 www.abclonal.com

Product Information

Source
Rabbit

Isotype
IgG

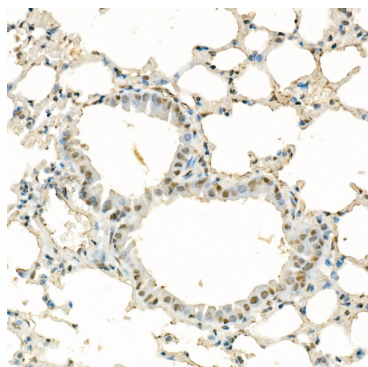
Purification
Affinity purification

Storage

Store at -20°C. Avoid freeze / thaw cycles.

Buffer: PBS containing 50% glycerol and 0.05% BSA, preserved with proclin300 or sodium azide (as specified on the Certificate of Analysis), pH 7.3.

Validation Data



Immunohistochemistry analysis of paraffin-embedded Mouse lung using DEC1 Rabbit mAb (A23536) at dilution of 1:200 (40x lens). High pressure antigen retrieval performed with 0.01M Citrate buffer (pH 6.0) prior to IHC staining.