

A23535

Leader in Biomolecular Solutions for Life Science



MMP9 Rabbit mAb

Catalog No.: A23535

Recombinant

6 Publications

Basic Information

Observed MW

100kDa

Calculated MW

78kDa

Category

Monoclonal Antibody

Applications

WB,ELISA,FC (intra)

Cross-Reactivity

Human

CloneNo number

ARC60372

Recommended Dilutions

WB 1:1000 - 1:4000

FC (intra) 1:500 - 1:1000

ELISA Recommended starting concentration is 1 µg/mL. Please optimize the concentration based on your specific assay requirements.

Contact

 www.abclonal.com

Background

Proteins of the matrix metalloproteinase (MMP) family are involved in the breakdown of extracellular matrix in normal physiological processes, such as embryonic development, reproduction, and tissue remodeling, as well as in disease processes, such as arthritis and metastasis. Most MMP's are secreted as inactive proproteins which are activated when cleaved by extracellular proteinases. The enzyme encoded by this gene degrades type IV and V collagens. Studies in rhesus monkeys suggest that the enzyme is involved in IL-8-induced mobilization of hematopoietic progenitor cells from bone marrow, and murine studies suggest a role in tumor-associated tissue remodeling.

Immunogen Information

Gene ID

4318

Swiss Prot

P14780

Immunogen

Recombinant protein (or fragment). This information is considered to be commercially sensitive.

Synonyms

GELB; CLG4B; MMP-9; MANDP2; MMP9

Product Information

Source

Rabbit

Isotype

IgG

Purification

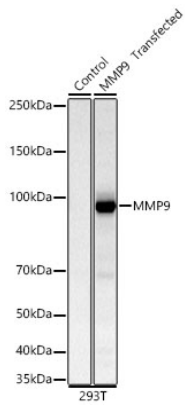
Affinity purification

Storage

Store at -20°C. Avoid freeze / thaw cycles.

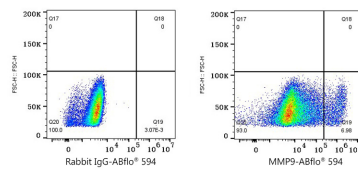
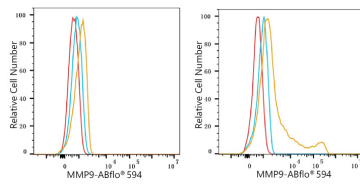
Buffer: PBS containing 50% glycerol and 0.05% BSA, preserved with proclin300 or sodium azide (as specified on the Certificate of Analysis), pH 7.3.

Validation Data



Western blot analysis of lysates from wild type (WT) and 293T cells transfected with MMP9 using MMP9 Rabbit mAb (A23535) at 1:1000 dilution.
Secondary antibody: HRP-conjugated Goat anti-Rabbit IgG (H+L) (AS014) at 1:10000 dilution.

Lysates/proteins: 25µg per lane.
Blocking buffer: 3% nonfat dry milk in TBST.
Detection: ECL Basic Kit (RM00020).
Exposure time: 30s.



Flow cytometry: 1×10^6 293F cells (Low Expression, left) and 293F (Transfection, right) cells were intracellularly-stained with MMP9 Rabbit mAb (A23535, 2 µg/mL, orange line) or ABflo® 594 Rabbit IgG isotype control (A23821, 5 µl/Test, blue line), followed by ABflo® 594-conjugated Goat Anti-Rabbit IgG (H+L) staining. Non-fluorescently stained cells were used as blank control (red line).

Flow cytometry: 1×10^6 293F (Transfection, right) cells were intracellularly-stained with ABflo® 594 Rabbit IgG isotype control (A23821, 5 µl/Test, left) or MMP9 Rabbit mAb (A23535, 2 µg/mL, right).