

A23530

Leader in Biomolecular Solutions for Life Science



# Mitofilin Rabbit mAb

Catalog No.: A23530 **Recombinant**

## Basic Information

### Observed MW

90 kDa

### Calculated MW

84 kDa

### Category

SMab Recombinant Monoclonal  
Antibody

### Applications

WB,IHC-P,IP,ELISA

### Cross-Reactivity

Human,Mouse

### CloneNo number

ARC61198

## Recommended Dilutions

**WB** 1:1000 - 1:6000

**IHC-P** 1:50 - 1:200

**IP** 0.5µg-4µg antibody for  
200µg-400µg extracts  
of whole cells

**ELISA** Recommended starting  
concentration is 1  
µg/mL. Please optimize  
the concentration  
based on your specific  
assay requirements.

## Contact

 [www.abclonal.com](http://www.abclonal.com)

## Background

Enables RNA binding activity. Involved in cristae formation. Located in mitochondrial inner membrane. Part of MICOS complex.

## Immunogen Information

### Gene ID

10989

### Swiss Prot

Q16891

### Immunogen

Recombinant protein (or fragment). This information is considered to be commercially sensitive.

### Synonyms

HMP; P87; P89; PIG4; Mic60; PIG52; MINOS2; P87/89; MICOS60; Mitofilin

## Product Information

### Source

Rabbit

### Isotype

IgG

### Purification

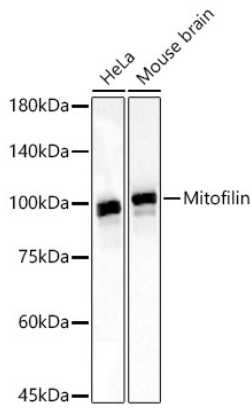
Affinity purification

### Storage

Store at -20°C. Avoid freeze / thaw cycles.

Buffer: PBS containing 50% glycerol and 0.05% BSA, preserved with proclin300 or sodium azide (as specified on the Certificate of Analysis), pH 7.3.

## Validation Data



Western blot analysis of various lysates, using Mitofilin Rabbit mAb (A23530) at 1:1000 dilution.

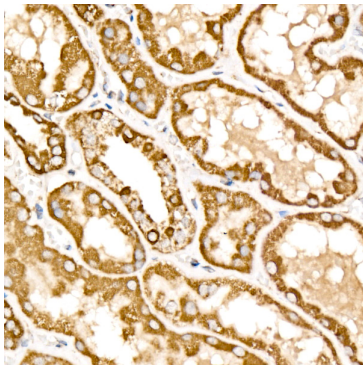
Secondary antibody: HRP-conjugated Goat anti-Rabbit IgG (H+L) (AS014) at 1:10000 dilution.

Lysates/proteins: 25µg per lane.

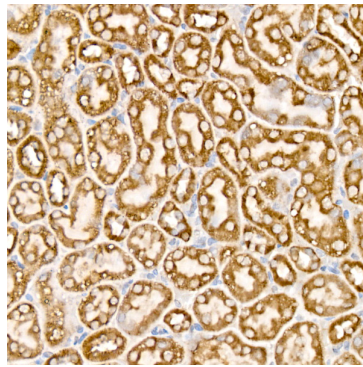
Blocking buffer: 3% nonfat dry milk in TBST.

Detection: ECL Basic Kit (RM00020).

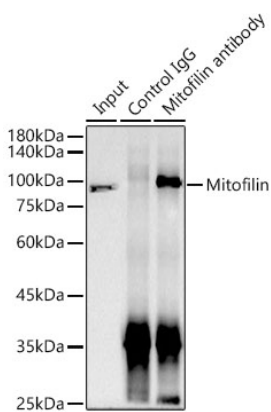
Exposure time: 3s.



Immunohistochemistry analysis of paraffin-embedded Human kidney using Mitofilin Rabbit mAb (A23530) at dilution of 1:200 (40x lens). High pressure antigen retrieval performed with 0.01M Citrate buffer (pH 6.0) prior to IHC staining.



Immunohistochemistry analysis of paraffin-embedded Mouse kidney using Mitofilin Rabbit mAb (A23530) at dilution of 1:200 (40x lens). High pressure antigen retrieval performed with 0.01M Citrate buffer (pH 6.0) prior to IHC staining.



Immunoprecipitation analysis of 300 µg extracts of 293F cells using 3 µg Mitofilin Rabbit mAb (A23530). Western blot was performed from the immunoprecipitate using Mitofilin Rabbit mAb (A23530) at a dilution of 1:10000.