

A23458

Leader in Biomolecular Solutions for Life Science



LEF1 Rabbit mAb

Catalog No.: A23458

Recombinant

1 Publications

Basic Information

Observed MW

25-60kDa

Calculated MW

44kDa

Category

Monoclonal Antibody

Applications

WB,IP,ELISA

Cross-Reactivity

Human,Mouse

CloneNo number

ARC57430

Recommended Dilutions

WB 1:7000 - 1:28000

IP 0.5µg-4µg antibody for
200µg-400µg extracts
of whole cells

ELISA Recommended starting
concentration is 1
µg/mL. Please optimize
the concentration
based on your specific
assay requirements.

Contact

 www.abclonal.com

Background

This gene encodes a transcription factor belonging to a family of proteins that share homology with the high mobility group protein-1. The protein encoded by this gene can bind to a functionally important site in the T-cell receptor-alpha enhancer, thereby conferring maximal enhancer activity. This transcription factor is involved in the Wnt signaling pathway, and it may function in hair cell differentiation and follicle morphogenesis. Mutations in this gene have been found in somatic sebaceous tumors. This gene has also been linked to other cancers, including androgen-independent prostate cancer. Alternative splicing results in multiple transcript variants.

Immunogen Information

Gene ID

51176

Swiss Prot

Q9UJU2

Immunogen

Recombinant protein (or fragment). This information is considered to be commercially sensitive.

Synonyms

LEF-1; TCF10; TCF7L3; TCF1ALPHA; LEF1

Product Information

Source

Rabbit

Isotype

IgG

Purification

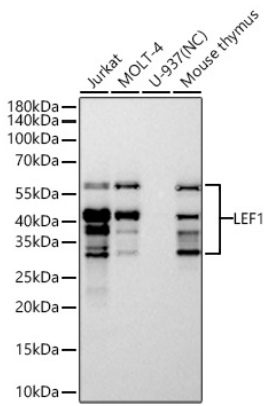
Affinity purification

Storage

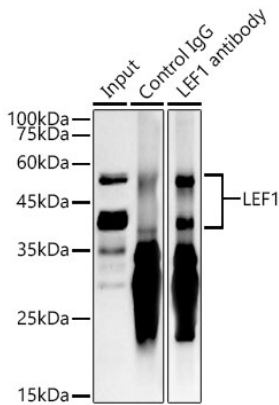
Store at -20°C. Avoid freeze / thaw cycles.

Buffer: PBS with 0.09% Sodium azide, 0.05% BSA, 50% glycerol, pH7.3.

Validation Data



Western blot analysis of various lysates using LEF1 Rabbit mAb (A23458) at 1:7000 dilution incubated overnight at 4°C.
Secondary antibody: HRP-conjugated Goat anti-Rabbit IgG (H+L) (AS014) at 1:10000 dilution.
Lysates/proteins: 25 µg per lane.
Blocking buffer: 3% nonfat dry milk in TBST.
Detection: ECL Basic Kit (RM00020).
Negative control (NC): U-937
Exposure time: 10s.



Immunoprecipitation analysis of 300 µg extracts of Jurkat cells using 3 µg LEF1 antibody (A23458). Western blot was performed from the immunoprecipitate using LEF1 antibody (A23458) at a dilution of 1:20000.