

A23452

Leader in Biomolecular Solutions for Life Science



[KD Validated] EGFR Rabbit mAb

Catalog No.: A23452

Recombinant

2 Publications

Basic Information

Observed MW

175kDa

Calculated MW

134kDa

Category

Monoclonal Antibody

Applications

WB,ELISA

Cross-Reactivity

Human

CloneNo number

ARC56230

Background

The protein encoded by this gene is a transmembrane glycoprotein that is a member of the protein kinase superfamily. This protein is a receptor for members of the epidermal growth factor family. EGFR is a cell surface protein that binds to epidermal growth factor, thus inducing receptor dimerization and tyrosine autophosphorylation leading to cell proliferation. Mutations in this gene are associated with lung cancer. EGFR is a component of the cytokine storm which contributes to a severe form of Coronavirus Disease 2019 (COVID-19) resulting from infection with severe acute respiratory syndrome coronavirus-2 (SARS-CoV-2).

Recommended Dilutions

WB 1:500 - 1:1000

ELISA Recommended starting concentration is 1 µg/mL. Please optimize the concentration based on your specific assay requirements.

Immunogen Information

Gene ID

1956

Swiss Prot

P00533

Immunogen

Synthetic peptide. This information is considered to be commercially sensitive.

Synonyms

ERBB; ERRP; HER1; mENA; ERBB1; PIG61; NISBD2; FR

Contact

 www.abclonal.com

Product Information

Source

Rabbit

Isotype

IgG

Purification

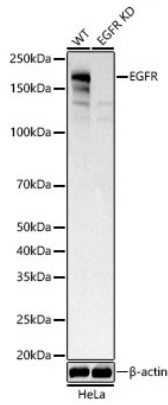
Affinity purification

Storage

Store at -20°C. Avoid freeze / thaw cycles.

Buffer: PBS containing 50% glycerol and 0.05% BSA, preserved with proclin300 or sodium azide (as specified on the Certificate of Analysis), pH 7.3.

Validation Data



Western blot analysis of lysates from wild type(WT) and EGFR knockdown (KD) HeLa cells, using [KD Validated] EGFR Rabbit mAb (A23452) at 1:1000 dilution.
Secondary antibody: HRP-conjugated Goat anti-Rabbit IgG (H+L) (AS014) at 1:10000 dilution.

Lysates/proteins: 25 μ g per lane.

Blocking buffer: 3% nonfat dry milk in TBST.

Detection: ECL Basic Kit (RM00020).

Exposure time: 30s.