

A23433

Leader in Biomolecular Solutions for Life Science



## RPGR Rabbit mAb

Catalog No.: A23433

Recombinant

### Basic Information

#### Observed MW

113kDa

#### Calculated MW

52kDa/70kDa/83kDa/90kDa/113kDa/127kDa

#### Category

SMab Recombinant Monoclonal Antibody

#### Applications

WB,IF/ICC,ELISA

#### Cross-Reactivity

Human,Mouse,Rat

#### CloneNo number

ARC59712

### Recommended Dilutions

**WB** 1:1000 - 1:3000

**IF/ICC** 1:50 - 1:200

**ELISA** Recommended starting concentration is 1 µg/mL. Please optimize the concentration based on your specific assay requirements.

### Contact



[www.abclonal.com](http://www.abclonal.com)

### Background

This gene encodes a protein with a series of six RCC1-like domains (RLDs), characteristic of the highly conserved guanine nucleotide exchange factors. The encoded protein is found in the Golgi body and interacts with RPGRIP1. This protein localizes to the outer segment of rod photoreceptors and is essential for their viability. Mutations in this gene have been associated with X-linked retinitis pigmentosa (XLRP). Multiple alternatively spliced transcript variants that encode different isoforms of this gene have been reported, but the full-length nature of only some have been determined.

### Immunogen Information

**Gene ID**  
6103

**Swiss Prot**  
Q92834-6

#### Immunogen

Recombinant protein (or fragment). This information is considered to be commercially sensitive.

#### Synonyms

CRD; RP3; COD1; PCDX; RP15; XLRP3; orf15; CORDX1; RPGR

### Product Information

**Source**  
Rabbit

**Isotype**  
IgG

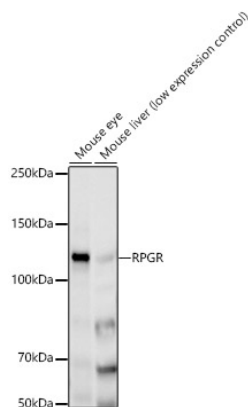
**Purification**  
Affinity purification

#### Storage

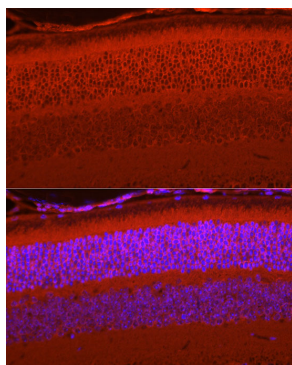
Store at -20°C. Avoid freeze / thaw cycles.

Buffer: PBS containing 50% glycerol and 0.05% BSA, preserved with proclin300 or sodium azide (as specified on the Certificate of Analysis), pH 7.3.

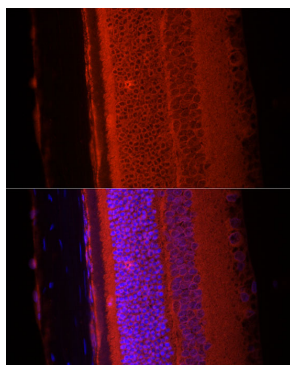
## Validation Data



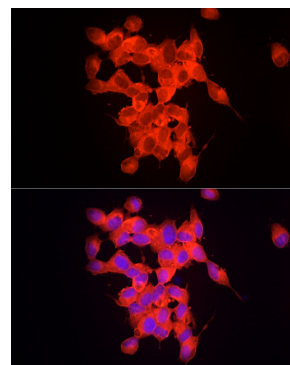
Western blot analysis of various lysates, using RPGR Rabbit mAb (A23433) at 1:6150 dilution.  
 Secondary antibody: HRP-conjugated Goat anti-Rabbit IgG (H+L) (AS014) at 1:10000 dilution.  
 Lysates/proteins: 25 µg per lane.  
 Blocking buffer: 3% nonfat dry milk in TBST.  
 Detection: ECL Basic Kit (RM00020).  
 Exposure time: 180 s.



Immunofluorescence analysis of paraffin-embedded mouse eye using RPGR Rabbit mAb (A23433) at dilution of 1:100 (40x lens).  
 Secondary antibody: Cy3-conjugated Goat anti-Rabbit IgG (H+L) (AS007) at 1:500 dilution. Blue: DAPI for nuclear staining. Perform microwave antigen retrieval with 10 mM citrate buffer pH 6.0 before commencing with IF staining protocol.



Immunofluorescence analysis of paraffin-embedded rat eye using RPGR Rabbit mAb (A23433) at dilution of 1:100 (40x lens).  
 Secondary antibody: Cy3-conjugated Goat anti-Rabbit IgG (H+L) (AS007) at 1:500 dilution. Blue: DAPI for nuclear staining. Perform microwave antigen retrieval with 10 mM citrate buffer pH 6.0 before commencing with IF staining protocol.



Immunofluorescence analysis of SH-SY5Y cells using RPGR Rabbit mAb (A23433) at dilution of 1:100 (40x lens). Secondary antibody: Cy3-conjugated Goat anti-Rabbit IgG (H+L) (AS007) at 1:500 dilution. Blue: DAPI for nuclear staining.