

A23414

Leader in Biomolecular Solutions for Life Science



## T-bet/Tbx21 Rabbit mAb

Catalog No.: A23414

Recombinant

### Basic Information

#### Observed MW

58-68kDa

#### Calculated MW

58kDa

#### Category

SMab Recombinant Monoclonal  
Antibody

#### Applications

WB,IHC-P,ELISA

#### Cross-Reactivity

Human

#### CloneNo number

ARC61889

### Recommended Dilutions

WB 1:500 - 1:1000

IHC-P 1:50 - 1:200

ELISA Recommended starting  
concentration is 1  
µg/mL. Please optimize  
the concentration  
based on your specific  
assay requirements.

### Contact



[www.abclonal.com](http://www.abclonal.com)

### Background

This gene is a member of a phylogenetically conserved family of genes that share a common DNA-binding domain, the T-box. T-box genes encode transcription factors involved in the regulation of developmental processes. This gene is the human ortholog of mouse Tbx21/Tbet gene. Studies in mouse show that Tbx21 protein is a Th1 cell-specific transcription factor that controls the expression of the hallmark Th1 cytokine, interferon-gamma (IFNG). Expression of the human ortholog also correlates with IFNG expression in Th1 and natural killer cells, suggesting a role for this gene in initiating Th1 lineage development from naive Th precursor cells.

### Immunogen Information

#### Gene ID

30009

#### Swiss Prot

Q9UL17

#### Immunogen

Recombinant protein (or fragment). This information is considered to be commercially sensitive.

#### Synonyms

TBET; IMD88; T-PET; T-bet; TBLYM; T-bet/Tbx21

### Product Information

#### Source

Rabbit

#### Isotype

IgG

#### Purification

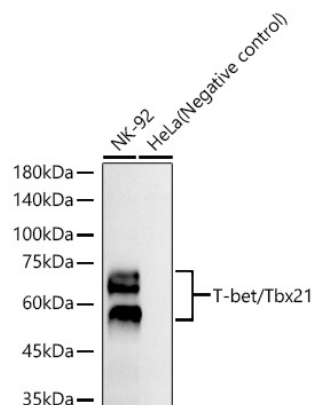
Affinity purification

#### Storage

Store at -20°C. Avoid freeze / thaw cycles.

Buffer: PBS with 0.05% proclin300, 0.05% BSA, 50% glycerol, pH7.3.

## Validation Data



Western blot analysis of various lysates, using T-bet/Tbx21 Rabbit mAb (A23414) at 1:1000 dilution.

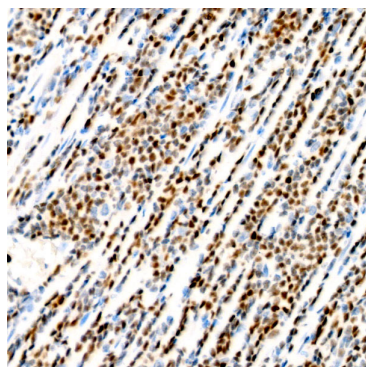
Secondary antibody: HRP-conjugated Goat anti-Rabbit IgG (H+L) (AS014) at 1:10000 dilution.

Lysates/proteins: 25µg per lane.

Blocking buffer: 3% nonfat dry milk in TBST.

Detection: ECL Basic Kit (RM00020).

Exposure time: 60s.



Immunohistochemistry analysis of paraffin-embedded Human peripheral T-cell lymphoma using T-bet/Tbx21 Rabbit mAb (A23414) at dilution of 1:200 (40x lens). High pressure antigen retrieval performed with 0.01M Citrate buffer (pH 6.0) prior to IHC staining.