

A23376

Leader in Biomolecular Solutions for Life Science



CD23 Rabbit mAb

Catalog No.: A23376

Recombinant

Basic Information

Observed MW

46kDa

Calculated MW

38kDa

Category

SMab Recombinant Monoclonal
Antibody

Applications

WB,ELISA

Cross-Reactivity

Human,Mouse

CloneNo number

ARC60396

Background

Predicted to enable carbohydrate binding activity. Acts upstream of or within positive regulation of humoral immune response mediated by circulating immunoglobulin. Located in external side of plasma membrane. Orthologous to human FCER2 (Fc fragment of IgE receptor II).

Recommended Dilutions

WB 1:500 - 1:1000

ELISA Recommended starting concentration is 1 µg/mL. Please optimize the concentration based on your specific assay requirements.

Immunogen Information

Gene ID

14128

Swiss Prot

P20693

Immunogen

Recombinant protein (or fragment). This information is considered to be commercially sensitive.

Synonyms

CD23; Fce2; Fcer2; Ly-42

Contact



www.abclonal.com

Product Information

Source

Rabbit

Isotype

IgG

Purification

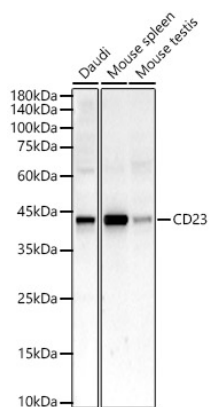
Affinity purification

Storage

Store at -20°C. Avoid freeze / thaw cycles.

Buffer: PBS with 0.05% proclin300, 0.05% BSA, 50% glycerol, pH7.3.

Validation Data



Western blot analysis of various lysates, using CD23 Rabbit mAb (A23376) at 1:1000 dilution.

Secondary antibody: HRP-conjugated Goat anti-Rabbit IgG (H+L) (AS014) at 1:10000 dilution.

Lysates/proteins: 25µg per lane.

Blocking buffer: 3% nonfat dry milk in TBST.

Detection: ECL Enhanced Kit (RM00021).

Exposure time: 90s.