

A23362

Leader in Biomolecular Solutions for Life Science



ABflo® 647 Rabbit anti-Mouse CD59a mAb

Catalog No.: A23362

Basic Information

Observed MW

Calculated MW

14kDa

Category

SMab Recombinant Monoclonal Antibody

Applications

FC

Cross-Reactivity

Mouse

CloneNo number

ARC57958-ABf647

Conjugate

ABflo® 647. Ex:648nm. Em:664nm.

Recommended Dilutions

FC 5 µl per 10⁶ cells in
100 µl volume

Contact



www.abclonal.com

Background

Predicted to enable complement binding activity. Involved in several processes, including negative regulation of angiogenesis; negative regulation of fibroblast growth factor production; and negative regulation of vascular endothelial growth factor receptor signaling pathway. Acts upstream of or within negative regulation of activation of membrane attack complex. Located in external side of plasma membrane. Is expressed in several structures, including Meckel's cartilage; nervous system; neural retina; skeleton; and testis. Human ortholog(s) of this gene implicated in colorectal carcinoma and ovarian cancer. Orthologous to human CD59 (CD59 molecule (CD59 blood group)).

Immunogen Information

Gene ID

12509

Swiss Prot

O55186

Immunogen

Recombinant protein (or fragment). This information is considered to be commercially sensitive.

Synonyms

Cd59; MACIF; MAC-IP

Product Information

Source

Rabbit

Isotype

IgG

Purification

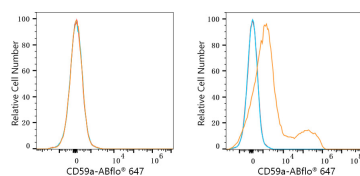
Affinity purification

Storage

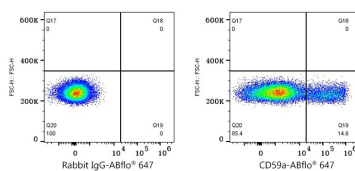
Store at 2-8°C. Avoid freeze.

Buffer: PBS containing 0.2% BSA, preserved with proclin300 or sodium azide (as specified on the Certificate of Analysis), pH 7.3.

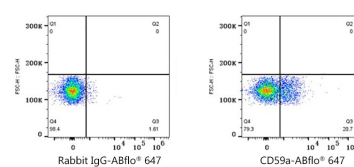
Validation Data



Flow cytometry: 1×10^6 293F cells (negative control, left) and 293F (Transfection, right) cells were surface-stained with ABflo® 647 Rabbit anti-Mouse CD59a mAb (A23362, 5 μ l/Test, orange line) or ABflo® 647 Rabbit IgG isotype control (A22070, 5 μ l/Test, blue line). Non-fluorescently stained cells was used as blank control (red line).



Flow cytometry: 1×10^6 293F (Transfection) cells were surface-stained with ABflo® 647 Rabbit IgG isotype control (A22070, 5 μ l/Test, left) or ABflo® 647 Rabbit anti-Mouse CD59a mAb (A23362, 5 μ l/Test, right).



Flow cytometry: 1×10^6 C57BL/6 mouse splenocytes were surface-stained with ABflo® 647 Rabbit IgG isotype control (A22070, 5 μ l/Test, left) or ABflo® 647 Rabbit anti-Mouse CD59a mAb (A23362, 5 μ l/Test, Right).