

A23298

Leader in Biomolecular Solutions for Life Science



FGFR2 Rabbit mAb

Catalog No.: A23298 **Recombinant**

Basic Information

Observed MW

145kDa

Calculated MW

92kDa

Category

SMab Recombinant Monoclonal Antibody

Applications

WB,FC,ELISA

Cross-Reactivity

Human

CloneNo number

ARC60257

Recommended Dilutions

WB 1:500 - 1:1000

FC 1:100 - 1:500

ELISA Recommended starting concentration is 1 µg/mL. Please optimize the concentration based on your specific assay requirements.

Contact

 www.abclonal.com

Background

The protein encoded by this gene is a member of the fibroblast growth factor receptor family, where amino acid sequence is highly conserved between members and throughout evolution. FGFR family members differ from one another in their ligand affinities and tissue distribution. A full-length representative protein consists of an extracellular region, composed of three immunoglobulin-like domains, a single hydrophobic membrane-spanning segment and a cytoplasmic tyrosine kinase domain. The extracellular portion of the protein interacts with fibroblast growth factors, setting in motion a cascade of downstream signals, ultimately influencing mitogenesis and differentiation. This particular family member is a high-affinity receptor for acidic, basic and/or keratinocyte growth factor, depending on the isoform. Mutations in this gene are associated with Crouzon syndrome, Pfeiffer syndrome, Craniosynostosis, Apert syndrome, Jackson-Weiss syndrome, Beare-Stevenson cutis gyrata syndrome, Saethre-Chotzen syndrome, and syndromic craniosynostosis. Multiple alternatively spliced transcript variants encoding different isoforms have been noted for this gene.

Immunogen Information

Gene ID

2263

Swiss Prot

P21802

Immunogen

Recombinant protein (or fragment). This information is considered to be commercially sensitive.

Synonyms

BEK; JWS; BBDS; CEK3; CFD1; ECT1; KGFR; TK14; TK25; BFR-1; CD332; K-SAM; FGFR2

Product Information

Source

Rabbit

Isotype

IgG

Purification

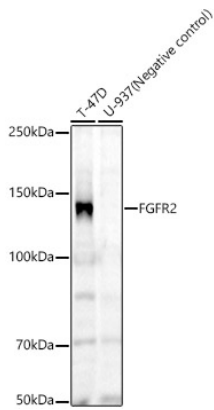
Affinity purification

Storage

Store at -20°C. Avoid freeze / thaw cycles.

Buffer: PBS containing 50% glycerol and 0.05% BSA, preserved with proclin300 or sodium azide (as specified on the Certificate of Analysis), pH 7.3.

Validation Data



Western blot analysis of various lysates, using FGFR2 Rabbit mAb (A23298) at 1:1000 dilution.

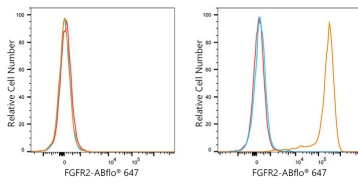
Secondary antibody: HRP-conjugated Goat anti-Rabbit IgG (H+L) (AS014) at 1:10000 dilution.

Lysates/proteins: 25µg per lane.

Blocking buffer: 3% nonfat dry milk in TBST.

Detection: ECL Enhanced Kit (RM00021).

Exposure time: 60s.



Flow cytometry: 1×10^6 HEL cells (negative control, Left) and KATO III cells (Right) were surface-stained with FGFR2 Rabbit mAb (A23298, 2 µg/mL, orange line) or ABflo® 647 Rabbit IgG isotype control (A22070, 2 µg/mL, blue line), followed by Alexa Fluor® 647 conjugated goat anti-rabbit pAb (1:200 dilution) staining. Non-fluorescently stained cells were used as blank control (red line).