

A2328

Leader in Biomolecular Solutions for Life Science



# MTA3 Rabbit pAb

Catalog No.: A2328

## Basic Information

### Observed MW

67kDa

### Calculated MW

68kDa

### Category

Polyclonal Antibody

### Applications

WB,ELISA

### Cross-Reactivity

Human,Mouse

## Background

Predicted to enable histone deacetylase binding activity; transcription coactivator activity; and transcription corepressor activity. Involved in negative regulation of transcription, DNA-templated. Located in nucleoplasm. Part of NuRD complex.

## Recommended Dilutions

WB 1:500 - 1:2000

## Immunogen Information

### Gene ID

57504

### Swiss Prot

Q9BTC8

### Immunogen

Recombinant fusion protein containing a sequence corresponding to amino acids 40-330 of human MTA3 (NP\_065795.1).

### Synonyms

MTA3

## Contact



[www.abclonal.com](http://www.abclonal.com)

## Product Information

### Source

Rabbit

### Isotype

IgG

### Purification

Affinity purification

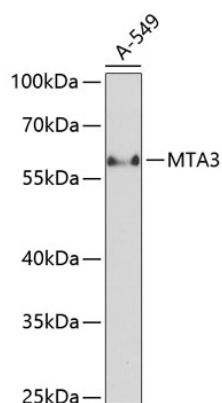
### Storage

Store at -20°C. Avoid freeze / thaw cycles.

Buffer: PBS with 0.02% sodium azide,50% glycerol,pH7.3.

## Validation Data

---



Western blot analysis of extracts of A-549 cells, using MTA3 antibody (A2328) at 1:1000 dilution.

Secondary antibody: HRP Goat Anti-Rabbit IgG (H+L) (AS014) at 1:10000 dilution.

Lysates/proteins: 25µg per lane.

Blocking buffer: 3% nonfat dry milk in TBST.

Detection: ECL Basic Kit (RM00020).

Exposure time: 30s.