

A23245

Leader in Biomolecular Solutions for Life Science



CD102 (ICAM2) Rabbit mAb

Catalog No.: A23245

Recombinant

Basic Information

Observed MW

45kDa/55-80kDa

Calculated MW

30kDa

Category

SMab Recombinant Monoclonal
Antibody

Applications

WB,IHC-P,ELISA

Cross-Reactivity

Human

CloneNo number

ARC59377

Recommended Dilutions

WB 1:1000 - 1:10000

IHC-P 1:50 - 1:200

ELISA Recommended starting
concentration is 1
µg/mL. Please optimize
the concentration
based on your specific
assay requirements.

Contact



www.abclonal.com

Background

The protein encoded by this gene is a member of the intercellular adhesion molecule (ICAM) family. All ICAM proteins are type I transmembrane glycoproteins, contain 2-9 immunoglobulin-like C2-type domains, and bind to the leukocyte adhesion LFA-1 protein. This protein may play a role in lymphocyte recirculation by blocking LFA-1-dependent cell adhesion. It mediates adhesive interactions important for antigen-specific immune response, NK-cell mediated clearance, lymphocyte recirculation, and other cellular interactions important for immune response and surveillance. Several transcript variants encoding the same protein have been found for this gene.

Immunogen Information

Gene ID

3384

Swiss Prot

P13598

Immunogen

Recombinant protein (or fragment). This information is considered to be commercially sensitive.

Synonyms

CD102; CD102 (ICAM2)

Product Information

Source

Rabbit

Isotype

IgG

Purification

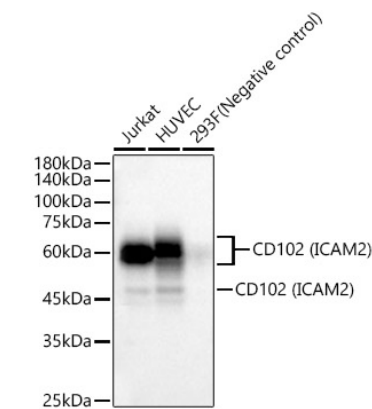
Affinity purification

Storage

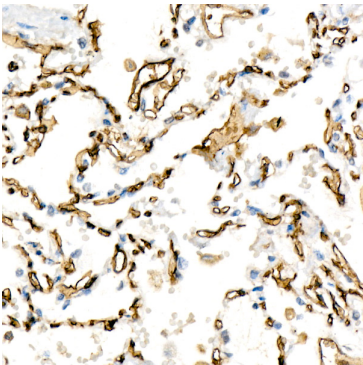
Store at -20°C. Avoid freeze / thaw cycles.

Buffer: PBS with 0.05% proclin300, 0.05% BSA, 50% glycerol, pH7.3.

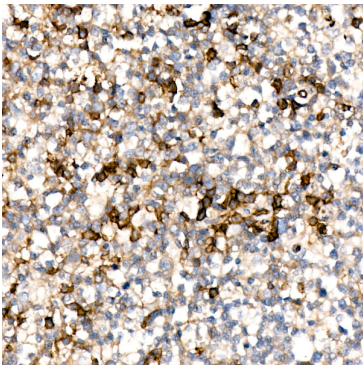
Validation Data



Western blot analysis of various lysates, using CD102 (ICAM2) Rabbit mAb (A23245) at 1:2000 dilution.
Secondary antibody: HRP-conjugated Goat anti-Rabbit IgG (H+L) (AS014) at 1:10000 dilution.
Lysates/proteins: 25µg per lane.
Blocking buffer: 3% nonfat dry milk in TBST.
Detection: ECL Basic Kit (RM00020).
Exposure time: 20s.



Immunohistochemistry analysis of paraffin-embedded Human lung cancer using CD102 (ICAM2) Rabbit mAb (A23245) at dilution of 1:200 (40x lens). High pressure antigen retrieval performed with 0.01M Citrate buffer (pH 6.0) prior to IHC staining.



Immunohistochemistry analysis of paraffin-embedded Human tonsil using CD102 (ICAM2) Rabbit mAb (A23245) at dilution of 1:200 (40x lens). High pressure antigen retrieval performed with 0.01M Citrate buffer (pH 6.0) prior to IHC staining.