

A23225

Leader in Biomolecular Solutions for Life Science



JUNB Rabbit mAb

Catalog No.: A23225

Recombinant

1 Publications

Basic Information

Observed MW

42kDa/43kDa

Calculated MW

36kDa

Category

SMab Recombinant Monoclonal
Antibody

Applications

WB,IP,ELISA

Cross-Reactivity

Human,Mouse

CloneNo number

ARC58948

Recommended Dilutions

WB 1:1000 - 1:5000

IP 0.5µg-4µg antibody for
200µg-400µg extracts
of whole cells

ELISA Recommended starting
concentration is 1
µg/mL. Please optimize
the concentration
based on your specific
assay requirements.

Contact



www.abclonal.com

Background

Enables sequence-specific double-stranded DNA binding activity. Involved in positive regulation of transcription by RNA polymerase II. Located in nucleoplasm. Part of transcription factor AP-1 complex. Biomarker of Hodgkin's lymphoma and anaplastic large cell lymphoma.

Immunogen Information

Gene ID

3726

Swiss Prot

P17275

Immunogen

Synthetic peptide. This information is considered to be commercially sensitive.

Synonyms

AP-1; JUNB

Product Information

Source

Rabbit

Isotype

IgG

Purification

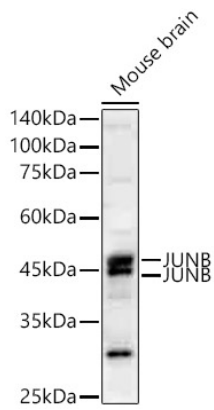
Affinity purification

Storage

Store at -20°C. Avoid freeze / thaw cycles.

Buffer: PBS containing 50% glycerol and 0.05% BSA, preserved with proclin300 or sodium azide (as specified on the Certificate of Analysis), pH 7.3.

Validation Data



Western blot analysis of lysates from Mouse brain, using JUNB Rabbit mAb (A23225) at 1:2000 dilution.

Secondary antibody: HRP-conjugated Goat anti-Rabbit IgG (H+L) (AS014) at 1:10000 dilution.

Lysates/proteins: 25µg per lane.

Blocking buffer: 3% nonfat dry milk in TBST.

Detection: ECL Enhanced Kit (RM00021).

Exposure time: 45s.