

A23166

Leader in Biomolecular Solutions for Life Science



## BRD2 Rabbit mAb

Catalog No.: A23166

Recombinant

### Basic Information

#### Observed MW

112kDa

#### Calculated MW

88kDa

#### Category

SMab Recombinant Monoclonal  
Antibody

#### Applications

WB,ELISA

#### Cross-Reactivity

Human,Mouse

#### CloneNo number

ARC56992

### Background

This gene encodes a transcriptional regulator that belongs to the BET (bromodomains and extra terminal domain) family of proteins. This protein associates with transcription complexes and with acetylated chromatin during mitosis, and it selectively binds to the acetylated lysine-12 residue of histone H4 via its two bromodomains. The gene maps to the major histocompatibility complex (MHC) class II region on chromosome 6p21.3, but sequence comparison suggests that the protein is not involved in the immune response. This gene has been implicated in juvenile myoclonic epilepsy, a common form of epilepsy that becomes apparent in adolescence. Multiple alternatively spliced variants have been described for this gene.

### Recommended Dilutions

WB 1:500 - 1:1000

ELISA Recommended starting concentration is 1 µg/mL. Please optimize the concentration based on your specific assay requirements.

### Immunogen Information

#### Gene ID

6046

#### Swiss Prot

P25440

#### Immunogen

Recombinant fusion protein containing a sequence corresponding to amino acids 1-345 of human BRD2 (NP\_005095.1).

#### Synonyms

FSH; NAT; RNF3; FSRG1; RING3; FSHRG1; D6S113E; O27.1.1; BRD2-IT1; BRD2

### Contact



[www.abclonal.com](http://www.abclonal.com)

### Product Information

#### Source

Rabbit

#### Isotype

IgG

#### Purification

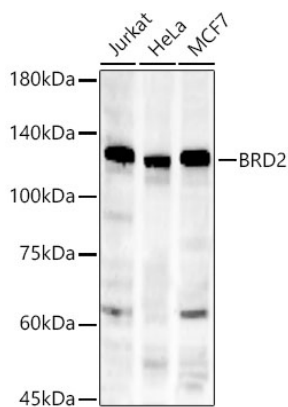
Affinity purification

#### Storage

Store at -20°C. Avoid freeze / thaw cycles.

Buffer: PBS with 0.05% proclin300,0.05% BSA,50% glycerol,pH7.3.

# Validation Data



Western blot analysis of various lysates, using BRD2 Rabbit mAb (A23166) at 1:1000 dilution.  
Secondary antibody: HRP-conjugated Goat anti-Rabbit IgG (H+L) (AS014) at 1:10000 dilution.  
Lysates/proteins: 25µg per lane.  
Blocking buffer: 3% nonfat dry milk in TBST.  
Detection: ECL Enhanced Kit (RM00021).  
Exposure time: 180s.