

A23154

Leader in Biomolecular Solutions for Life Science



# Cleaved Caspase-7 Rabbit mAb

Catalog No.: A23154

Recombinant

## Basic Information

### Observed MW

20kDa

### Calculated MW

34kDa

### Category

SMab Recombinant Monoclonal  
Antibody

### Applications

WB, ELISA

### Cross-Reactivity

Human

### CloneNo number

ARC58776

## Background

This gene encodes a member of the cysteine-aspartic acid protease (caspase) family. Sequential activation of caspases plays a central role in the execution-phase of cell apoptosis. Caspases exist as inactive proenzymes which undergo proteolytic processing at conserved aspartic residues to produce two subunits, large and small, that dimerize to form the active enzyme. The precursor of the encoded protein is cleaved by caspase 3 and 10, is activated upon cell death stimuli and induces apoptosis. Alternatively spliced transcript variants encoding multiple isoforms have been observed for this gene.

## Recommended Dilutions

**WB** 1:1000 - 1:2000

**ELISA** Recommended starting concentration is 1 µg/mL. Please optimize the concentration based on your specific assay requirements.

## Immunogen Information

### Gene ID

840

### Swiss Prot

P55210

### Immunogen

Synthetic peptide. This information is considered to be commercially sensitive.

### Synonyms

MCH3; CMH-1; LICE2; CASP-7; ICE-LAP3; Cleaved Caspase-7

## Contact



[www.abclonal.com](http://www.abclonal.com)

## Product Information

### Source

Rabbit

### Isotype

IgG

### Purification

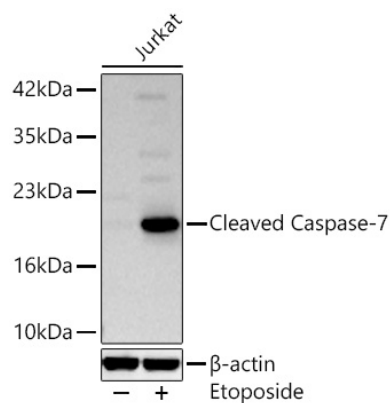
Affinity purification

### Storage

Store at -20°C. Avoid freeze / thaw cycles.

Buffer: PBS containing 50% glycerol and 0.05% BSA, preserved with proclin300 or sodium azide (as specified on the Certificate of Analysis), pH 7.3.

## Validation Data



Western blot analysis of lysates from Jurkat cells using Cleaved Caspase-7 Rabbit mAb (A23154) at 1:1000 dilution incubated overnight at 4°C. Jurkat cells were treated with Etoposide (25  $\mu$ M) at 37°C for 5 hours.

Secondary antibody: HRP-conjugated Goat anti-Rabbit IgG (H+L) (AS014) at 1:10000 dilution.

Lysates/proteins: 25  $\mu$ g per lane.

Blocking buffer: 3% nonfat dry milk in TBST.

Detection: ECL Basic Kit (RM00020).

Exposure time: 30s.