

A23151

Leader in Biomolecular Solutions for Life Science



IL4I1 Rabbit mAb

Catalog No.: A23151 **Recombinant**

Basic Information

Observed MW

70kDa

Calculated MW

63kDa

Category

SMab Recombinant Monoclonal Antibody

Applications

WB,ELISA

Cross-Reactivity

Human

CloneNo number

ARC54077

Recommended Dilutions

WB 1:2000 - 1:10000

ELISA Recommended starting concentration is 1 µg/mL. Please optimize the concentration based on your specific assay requirements.

Contact

 www.abclonal.com

Background

This gene encodes a secreted L-amino acid oxidase protein which primarily catabolizes L-phenylalanine and, to a lesser extent, L-arginine. The expression of this gene is induced by the cytokine interleukin 4 in B cells. This gene is also expressed in macrophages and dendritic cells. This protein may play a role immune system escape as it is expressed in tumor-associated macrophages and suppresses T-cell responses. This protein also contains domains thought to be involved in the binding of flavin adenine dinucleotide (FAD) cofactor. Multiple transcript variants encoding different isoforms have been found for this gene. Some transcripts of this gene share a promoter and exons of the 5' UTR with the overlapping NUP62 gene.

Immunogen Information

Gene ID

259307

Swiss Prot

Q96RQ9

Immunogen

Synthetic peptide. This information is considered to be commercially sensitive.

Synonyms

LAO; FIG1; LAAO; hIL4I1; IL4I1

Product Information

Source

Rabbit

Isotype

IgG

Purification

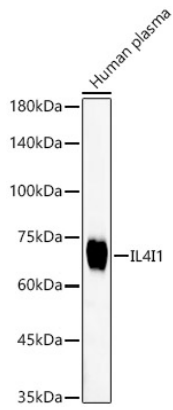
Affinity purification

Storage

Store at -20°C. Avoid freeze / thaw cycles.

Buffer: PBS containing 50% glycerol and 0.05% BSA, preserved with proclin300 or sodium azide (as specified on the Certificate of Analysis), pH 7.3.

Validation Data



Western blot analysis of lysates from Human plasma, using IL4I1 Rabbit mAb (A23151) at 1:10000 dilution.

Secondary antibody: HRP-conjugated Goat anti-Rabbit IgG (H+L) (AS014) at 1:10000 dilution.

Lysates/proteins: 25µg per lane.

Blocking buffer: 3% nonfat dry milk in TBST.

Detection: ECL Basic Kit (RM00020).

Exposure time: 60s.