

A23150

Leader in Biomolecular Solutions for Life Science



ATP6 Rabbit mAb

Catalog No.: A23150

Recombinant

1 Publications

Basic Information

Observed MW

20kDa

Calculated MW

25kDa

Category

SMab Recombinant Monoclonal Antibody

Applications

WB,ELISA

Cross-Reactivity

Human

CloneNo number

ARC59849

Recommended Dilutions

WB 1:1000 - 1:5000

ELISA Recommended starting concentration is 1 µg/mL. Please optimize the concentration based on your specific assay requirements.

Contact

 www.abclonal.com

Background

Predicted to contribute to proton-transporting ATP synthase activity, rotational mechanism. Predicted to be involved in mitochondrial ATP synthesis coupled proton transport. Located in mitochondrion. Is expressed in several structures, including alimentary system; brain; heart; integumental system; and sensory organ. Human ortholog(s) of this gene implicated in Leber hereditary optic neuropathy; NARP syndrome; Parkinson's disease; multiple sclerosis; and systemic lupus erythematosus. Orthologous to human MT-ATP6 (mitochondrially encoded ATP synthase membrane subunit 6).

Immunogen Information

Gene ID

17705

Swiss Prot

P00848

Immunogen

Synthetic peptide. This information is considered to be commercially sensitive.

Synonyms

ATP6

Product Information

Source

Rabbit

Isotype

IgG

Purification

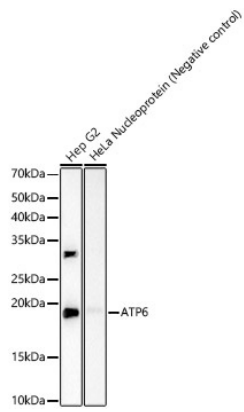
Affinity purification

Storage

Store at -20°C. Avoid freeze / thaw cycles.

Buffer: PBS containing 50% glycerol and 0.05% BSA, preserved with proclin300 or sodium azide (as specified on the Certificate of Analysis), pH 7.3.

Validation Data



Western blot analysis of various lysates, using ATP6 Rabbit mAb (A23150) at 1:2000 dilution.

Secondary antibody: HRP-conjugated Goat anti-Rabbit IgG (H+L) (AS014) at 1:10000 dilution.

Lysates/proteins: 25 μ g per lane.

Blocking buffer: 3% nonfat dry milk in TBST.

Detection: ECL Basic Kit (RM00020).

Exposure time: 90s.