

A23050

Leader in Biomolecular Solutions for Life Science



CD200 Rabbit pAb

Catalog No.: A23050

Basic Information

Observed MW

45-50kDa

Calculated MW

31kDa

Category

Polyclonal Antibody

Applications

WB,ELISA

Cross-Reactivity

Mouse,Rat

Background

Predicted to enable protein binding activity involved in heterotypic cell-cell adhesion. Involved in negative regulation of cell population proliferation; negative regulation of macrophage activation; and negative regulation of neuroinflammatory response. Located in cell surface. Is expressed in several structures, including anterior naris; aorta; bone; nervous system; and retina. Used to study autoimmune disease. Orthologous to human CD200 (CD200 molecule).

Recommended Dilutions

WB 1:500 - 1:1000

ELISA Recommended starting concentration is 1 µg/mL. Please optimize the concentration based on your specific assay requirements.

Immunogen Information

Gene ID

17470

Swiss Prot

O54901

Immunogen

Recombinant fusion protein containing a sequence corresponding to amino acids 31-232 of mouse CD200. (NP_034948.3).

Synonyms

OX2; Mox2; CD200

Contact



www.abclonal.com

Product Information

Source

Rabbit

Isotype

IgG

Purification

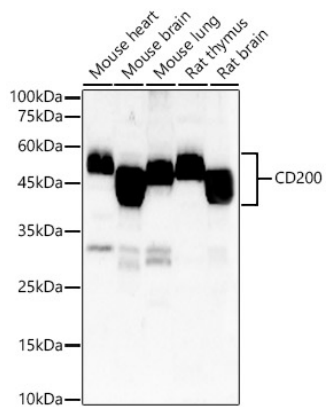
Affinity purification

Storage

Store at -20°C. Avoid freeze / thaw cycles.

Buffer: PBS with 0.05% proclin300,50% glycerol,pH7.3.

Validation Data



Western blot analysis of various lysates, using CD200 Rabbit pAb (A23050) at 1:700 dilution.
Secondary antibody: HRP-conjugated Goat anti-Rabbit IgG (H+L) (AS014) at 1:10000 dilution.
Lysates/proteins: 25µg per lane.
Blocking buffer: 3% nonfat dry milk in TBST.
Detection: ECL Basic Kit (RM00020).
Exposure time: 180s.