

A22789

Leader in Biomolecular Solutions for Life Science



# ABF1 Rabbit pAb

Catalog No.: A22789

## Basic Information

### Observed MW

### Calculated MW

39kDa

### Category

Polyclonal Antibody

### Applications

WB,ELISA

### Cross-Reactivity

Arabidopsis thaliana

## Background

Identified as a protein that binds to abscisic acid response elements. May mediate transcriptional regulation of ABA responses.

## Recommended Dilutions

**WB** 1:500 - 1:1000

**ELISA** Recommended starting concentration is 1 µg/mL. Please optimize the concentration based on your specific assay requirements.

## Immunogen Information

### Gene ID

841395

### Swiss Prot

Q8L3W1

### Immunogen

Recombinant fusion protein containing a sequence corresponding to amino acids 100-200 of Arabidopsis thaliana ABF1. (NP\_564551.1).

### Synonyms

abscisic acid responsive element-binding factor 1; AtABF1; F14J22.7; F14J22\_7; ABF1

## Contact

 [www.abclonal.com](http://www.abclonal.com)

## Product Information

### Source

Rabbit

### Isotype

IgG

### Purification

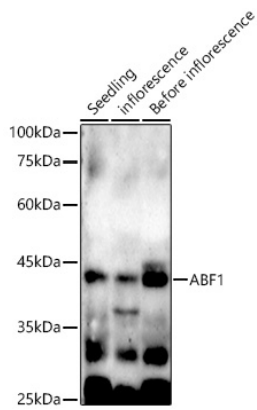
Affinity purification

### Storage

Store at -20°C. Avoid freeze / thaw cycles.

Buffer: PBS with 0.02% sodium azide, 50% glycerol, pH7.3.

## Validation Data



Western blot analysis of various tissues from *Arabidopsis thaliana*, using ABF1 Rabbit pAb (A22789) at 1:600 dilution.

Secondary antibody: HRP-conjugated Goat anti-Rabbit IgG (H+L) (AS014) at 1:10000 dilution.

Lysates/proteins: 25µg per lane.

Blocking buffer: 3% nonfat dry milk in TBST.

Detection: ECL Basic Kit (RM00020).

Exposure time: 180s.