

A22733

Leader in Biomolecular Solutions for Life Science



ELN Rabbit mAb

Catalog No.: A22733

Recombinant

1 Publications

Basic Information

Observed MW

68kDa

Calculated MW

68kDa

CategorySMab Recombinant Monoclonal
Antibody**Applications**

WB,IHC-P,ELISA,IF-P

Cross-Reactivity

Human,Rat

CloneNo number

ARC58665

Background

This gene encodes a protein that is one of the two components of elastic fibers. Elastic fibers comprise part of the extracellular matrix and confer elasticity to organs and tissues including the heart, skin, lungs, ligaments, and blood vessels. The encoded protein is rich in hydrophobic amino acids such as glycine and proline, which form mobile hydrophobic regions bounded by crosslinks between lysine residues. Degradation products of the encoded protein, known as elastin-derived peptides or elastokines, bind the elastin receptor complex and other receptors and stimulate migration and proliferation of monocytes and skin fibroblasts. Elastokines can also contribute to cancer progression. Deletions and mutations in this gene are associated with supravalvular aortic stenosis (SVAS) and autosomal dominant cutis laxa.

Recommended Dilutions

WB 1:500 - 1:1000**IF-P** 1:100 - 1:400**IHC-P** 1:500 - 1:2000**ELISA** Recommended starting concentration is 1 µg/mL. Please optimize the concentration based on your specific assay requirements.

Immunogen Information

Gene ID

2006

Swiss Prot

P15502

Immunogen

Recombinant protein (or fragment). This information is considered to be commercially sensitive.

Synonyms

WS; WBS; SVAS; ADCL1; ELN

Product Information

Source

Rabbit

Isotype

IgG

Purification

Affinity purification

Storage

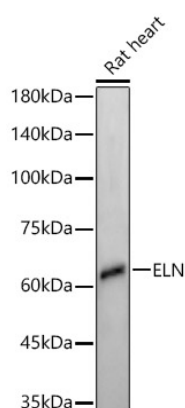
Store at -20°C. Avoid freeze / thaw cycles.

Buffer: PBS containing 50% glycerol and 0.05% BSA, preserved with proclin300 or sodium azide (as specified on the Certificate of Analysis), pH 7.3.

Contact

www.abclonal.com

Validation Data



Western blot analysis of lysates from Rat heart, using ELN Rabbit mAb (A22733) at 1:1000 dilution.

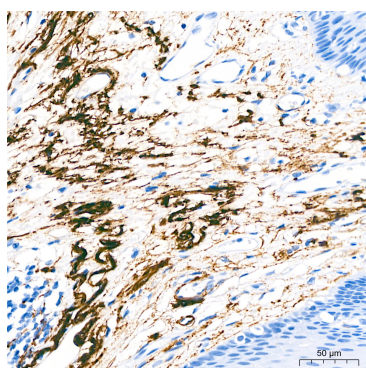
Secondary antibody: HRP-conjugated Goat anti-Rabbit IgG (H+L) (AS014) at 1:10000 dilution.

Lysates/proteins: 25µg per lane.

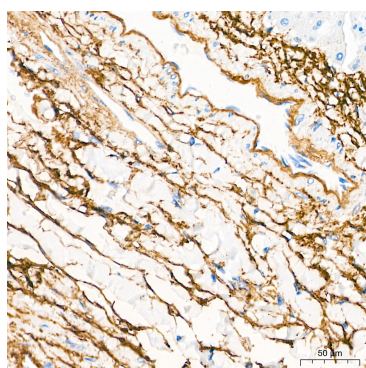
Blocking buffer: 3% nonfat dry milk in TBST.

Detection: ECL Enhanced Kit (RM00021).

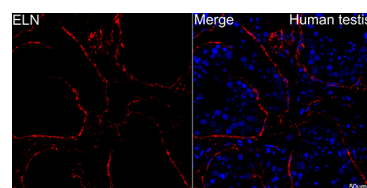
Exposure time: 180s.



Immunohistochemistry analysis of paraffin-embedded Human esophagus tissue using ELN Rabbit mAb (A22733) at a dilution of 1:800 (40x lens). High pressure antigen retrieval performed with 0.01M Citrate Buffer (pH 6.0) prior to IHC staining.



Immunohistochemistry analysis of paraffin-embedded Human liver tissue using ELN Rabbit mAb (A22733) at a dilution of 1:800 (40x lens). High pressure antigen retrieval performed with 0.01M Citrate Buffer (pH 6.0) prior to IHC staining.



Confocal imaging of human testis using ELN Rabbit mAb (A22733, at dilution of 1:100) (Red). DAPI was used for nuclear staining (blue). Objective: 40x. Perform high pressure antigen retrieval with 10 mM citrate buffer pH 6.0 before commencing with IF staining protocol.