

A22731

Leader in Biomolecular Solutions for Life Science



TCAP Rabbit mAb

Catalog No.: A22731

Recombinant

Basic Information

Observed MW

19kDa/21kDa

Calculated MW

19kDa

Category

SMab Recombinant Monoclonal
Antibody

Applications

WB,IF/ICC,ELISA

Cross-Reactivity

Human,Mouse,Rat

CloneNo number

ARC58539

Background

Sarcomere assembly is regulated by the muscle protein titin. Titin is a giant elastic protein with kinase activity that extends half the length of a sarcomere. It serves as a scaffold to which myofibrils and other muscle related proteins are attached. This gene encodes a protein found in striated and cardiac muscle that binds to the titin Z1-Z2 domains and is a substrate of titin kinase, interactions thought to be critical to sarcomere assembly. Mutations in this gene are associated with limb-girdle muscular dystrophy type 2G.

Recommended Dilutions

WB 1:2000 - 1:6000

IF/ICC 1:50 - 1:200

Immunogen Information

Gene ID

8557

Swiss Prot

O15273

Immunogen

Recombinant fusion protein containing a sequence corresponding to amino acids 1-167 of human TCAP. (NP_003664.1).

Synonyms

TELE; CMD1N; CMH25; T-cap; LGMD2G; LGMDR7; telethonin; TCAP

Contact



www.abclonal.com

Product Information

Source

Rabbit

Isotype

IgG

Purification

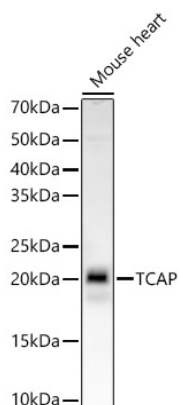
Affinity purification

Storage

Store at -20°C. Avoid freeze / thaw cycles.

Buffer: PBS with 0.05% proclin300,0.05% BSA,50% glycerol,pH7.3.

Validation Data



Western blot analysis of lysates from Mouse heart, using TCAP Rabbit mAb (A22731) at 1:5000 dilution.

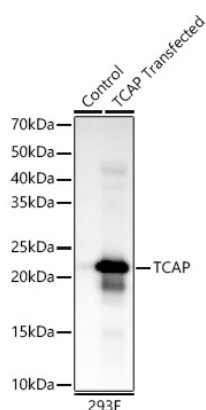
Secondary antibody: HRP Goat Anti-Rabbit IgG (H+L) (AS014) at 1:10000 dilution.

Lysates/proteins: 25µg per lane.

Blocking buffer: 3% nonfat dry milk in TBST.

Detection: ECL Basic Kit (RM00020).

Exposure time: 90s.



Western blot analysis of lysates from 293F-TCAP-c cells, using TCAP Rabbit mAb (A22731) at 1:5000 dilution.

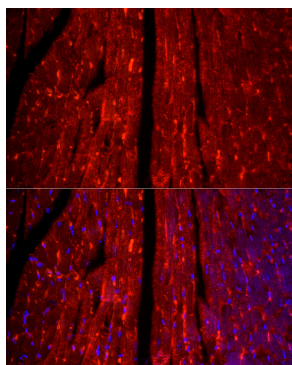
Secondary antibody: HRP Goat Anti-Rabbit IgG (H+L) (AS014) at 1:10000 dilution.

Lysates/proteins: 25µg per lane.

Blocking buffer: 3% nonfat dry milk in TBST.

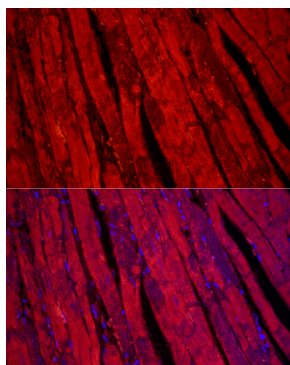
Detection: ECL Basic Kit (RM00020).

Exposure time: 10s.



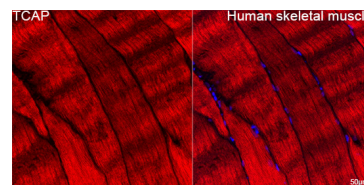
Immunofluorescence analysis of paraffin-embedded mouse heart using TCAP Rabbit mAb (A22731) at dilution of 1:100 (40x lens).

Secondary antibody: Cy3 Goat Anti-Rabbit IgG (H+L) (AS007) at 1:500 dilution. Blue: DAPI for nuclear staining.



Immunofluorescence analysis of paraffin-embedded rat heart using TCAP Rabbit mAb (A22731) at dilution of 1:100 (40x lens).

Secondary antibody: Cy3 Goat Anti-Rabbit IgG (H+L) (AS007) at 1:500 dilution. Blue: DAPI for nuclear staining.



Confocal imaging of Human skeletal muscle using TCAP Rabbit mAb (A22731, at dilution of 1:100) (Red). DAPI was used for nuclear staining (blue). Objective: 40x. Perform microwave antigen retrieval with 10 mM citrate buffer pH 6.0 before commencing with IF staining protocol.