

A22703

Leader in Biomolecular Solutions for Life Science



# ATAD3A/ATAD3B Rabbit pAb

Catalog No.: A22703

## Basic Information

### Observed MW

68kDa

### Calculated MW

71/73kDa

### Category

Polyclonal Antibody

### Applications

WB,IF/ICC,ELISA

### Cross-Reactivity

Human,Mouse,Rat

## Background

The protein encoded by this gene is localized to the mitochondrial inner membrane, where it can bind to a highly-related protein, ATAD3A. ATAD3A appears to interact with matrix nucleoid complexes, and the encoded protein negatively regulates that interaction. This gene is expressed almost exclusively in pluripotent embryonic stem cells and some cancer cells. Two transcript variants encoding different isoforms have been found for this gene.

## Recommended Dilutions

**WB** 1:500 - 1:1000

**IF/ICC** 1:50 - 1:200

**ELISA** Recommended starting concentration is 1 µg/mL. Please optimize the concentration based on your specific assay requirements.

## Immunogen Information

### Gene ID

55210/83858

### Swiss Prot

Q9NVI7/Q5T9A4

### Immunogen

Recombinant protein (or fragment). This information is considered to be commercially sensitive.

### Synonyms

TOB3; AAA-TOB3; ATAD3A/ATAD3B

## Contact

 [www.abclonal.com](http://www.abclonal.com)

## Product Information

### Source

Rabbit

### Isotype

IgG

### Purification

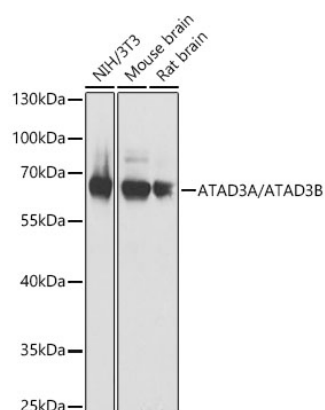
Affinity purification

### Storage

Store at -20°C. Avoid freeze / thaw cycles.

Buffer: PBS containing 50% glycerol, preserved with proclin300 or sodium azide (as specified on the Certificate of Analysis), pH 7.3.

## Validation Data



Western blot analysis of various lysates, using ATAD3A/ATAD3B Rabbit pAb (A22703) at 1:1000 dilution.

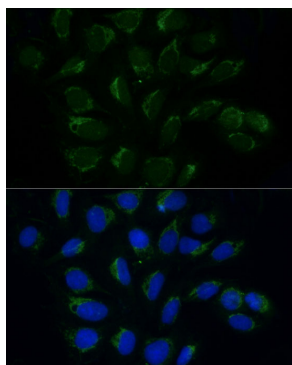
Secondary antibody: HRP-conjugated Goat anti-Rabbit IgG (H+L) (AS014) at 1:10000 dilution.

Lysates/proteins: 25µg per lane.

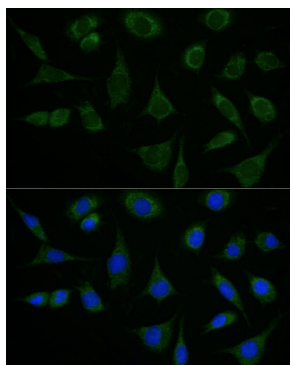
Blocking buffer: 3% nonfat dry milk in TBST.

Detection: ECL Basic Kit (RM00020).

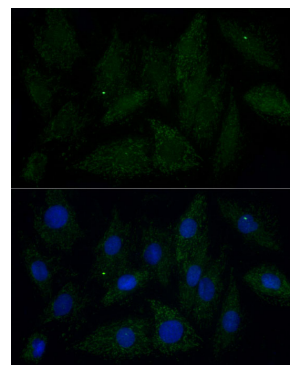
Exposure time: 1s.



Immunofluorescence analysis of U2OS cells using ATAD3A/ATAD3B Rabbit pAb (A22703) at dilution of 1:100 (40x lens). Secondary antibody: Cy3-conjugated Goat anti-Rabbit IgG (H+L) (AS007) at 1:500 dilution. Blue: DAPI for nuclear staining.



Immunofluorescence analysis of L929 cells using ATAD3A/ATAD3B Rabbit pAb (A22703) at dilution of 1:100 (40x lens). Secondary antibody: Cy3-conjugated Goat anti-Rabbit IgG (H+L) (AS007) at 1:500 dilution. Blue: DAPI for nuclear staining.



Immunofluorescence analysis of H9C2 cells using ATAD3A/ATAD3B Rabbit pAb (A22703) at dilution of 1:100 (40x lens). Secondary antibody: Cy3-conjugated Goat anti-Rabbit IgG (H+L) (AS007) at 1:500 dilution. Blue: DAPI for nuclear staining.