

A22683

Leader in Biomolecular Solutions for Life Science



## [KO Validated] NF-kB p65/RelA Rabbit pAb

Catalog No.: A22683

**KO** Validated

1 Publications

### Basic Information

#### Observed MW

65kDa

#### Calculated MW

60kDa

#### Category

Polyclonal Antibody

#### Applications

WB,IHC-P,IF/ICC,ELISA

#### Cross-Reactivity

Human,Mouse,Rat

### Background

NF-kappa-B is a ubiquitous transcription factor involved in several biological processes. It is held in the cytoplasm in an inactive state by specific inhibitors. Upon degradation of the inhibitor, NF-kappa-B moves to the nucleus and activates transcription of specific genes. NF-kappa-B is composed of NFKB1 or NFKB2 bound to either REL, RELA, or RELB. The most abundant form of NF-kappa-B is NFKB1 complexed with the product of this gene, RELA. Four transcript variants encoding different isoforms have been found for this gene.

### Recommended Dilutions

**WB** 1:2000 - 1:10000

**IHC-P** 1:100 - 1:500

**IF/ICC** 1:100 - 1:500

### Immunogen Information

#### Gene ID

5970

#### Swiss Prot

Q04206

#### Immunogen

Recombinant fusion protein containing a sequence corresponding to amino acids 450-551 of human NF-kB p65/RelA. (NP\_068810.3).

#### Synonyms

p65; CMCU; NFKB3; AIF3BL3; IA

### Contact



[www.abclonal.com](http://www.abclonal.com)

### Product Information

#### Source

Rabbit

#### Isotype

IgG

#### Purification

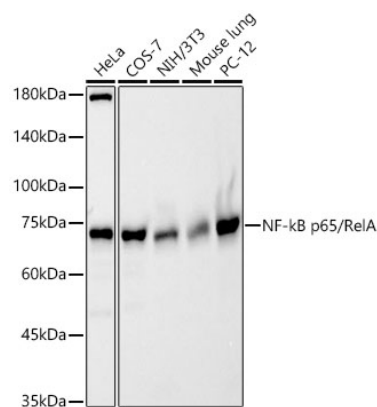
Affinity purification

#### Storage

Store at -20°C. Avoid freeze / thaw cycles.

Buffer: PBS with 0.05% proclin300,50% glycerol,pH7.3.

## Validation Data



Western blot analysis of various lysates, using NF-kB p65/RelA Rabbit pAb (A22683) at 1:10000 dilution.

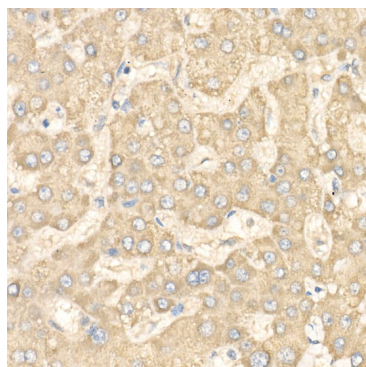
Secondary antibody: HRP-conjugated Goat anti-Rabbit IgG (H+L) (AS014) at 1:10000 dilution.

Lysates/proteins: 25µg per lane.

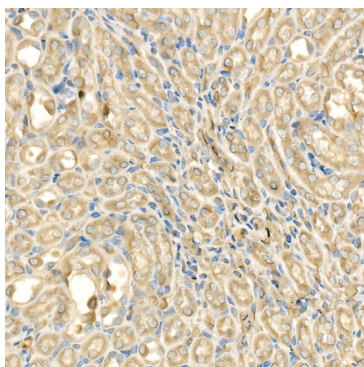
Blocking buffer: 3% nonfat dry milk in TBST.

Detection: ECL Basic Kit (RM00020).

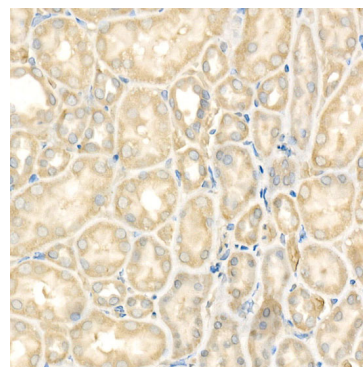
Exposure time: 60s.



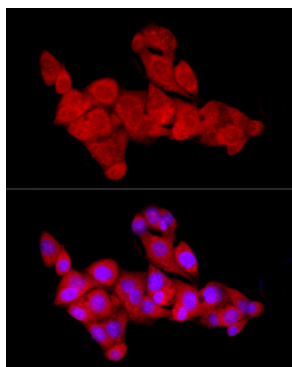
Immunohistochemistry analysis of paraffin-embedded Human liver using [KO Validated] NF-kB p65/RelA Rabbit pAb (A22683) at dilution of 1:300 (40x lens). High pressure antigen retrieval performed with 0.01M Citrate Buffer (pH 6.0) prior to IHC staining.



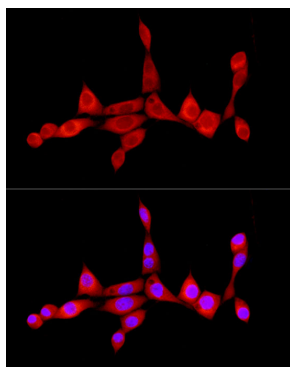
Immunohistochemistry analysis of paraffin-embedded Mouse kidney using [KO Validated] NF-kB p65/RelA Rabbit pAb (A22683) at dilution of 1:300 (40x lens). High pressure antigen retrieval performed with 0.01M Citrate Buffer (pH 6.0) prior to IHC staining.



Immunohistochemistry analysis of paraffin-embedded Rat kidney using [KO Validated] NF-kB p65/RelA Rabbit pAb (A22683) at dilution of 1:300 (40x lens). High pressure antigen retrieval performed with 0.01M Citrate Buffer (pH 6.0) prior to IHC staining.



Immunofluorescence analysis of HepG2 cells using [KO Validated] NF-kB p65/RelA Rabbit pAb (A22683) at dilution of 1:300 (40x lens). Secondary antibody: Cy3-conjugated Goat anti-Rabbit IgG (H+L) (AS007) at 1:500 dilution. Blue: DAPI for nuclear staining.



Immunofluorescence analysis of NIH/3T3 cells using [KO Validated] NF-kB p65/RelA Rabbit pAb (A22683) at dilution of 1:300 (40x lens). Secondary antibody: Cy3-conjugated Goat anti-Rabbit IgG (H+L) (AS007) at 1:500 dilution. Blue: DAPI for nuclear staining.