

A22617

Leader in Biomolecular Solutions for Life Science



ITK/EMT Rabbit mAb

Catalog No.: A22617

Recombinant

Basic Information

Observed MW

75kDa

Calculated MW

72kDa

Category

SMab Recombinant Monoclonal
Antibody

Applications

WB, ELISA

Cross-Reactivity

Human

CloneNo number

ARC58362

Background

This gene encodes an intracellular tyrosine kinase expressed in T-cells. The protein contains both SH2 and SH3 domains which are often found in intracellular kinases. It is thought to play a role in T-cell proliferation and differentiation.

Recommended Dilutions

WB 1:2000 - 1:6000

ELISA Recommended starting concentration is 1 µg/mL. Please optimize the concentration based on your specific assay requirements.

Immunogen Information

Gene ID

3702

Swiss Prot

Q08881

Immunogen

Recombinant protein (or fragment). This information is considered to be commercially sensitive.

Synonyms

EMT; LYK; LPFS1; PSCTK2; ITK/EMT

Contact



www.abclonal.com

Product Information

Source

Rabbit

Isotype

IgG

Purification

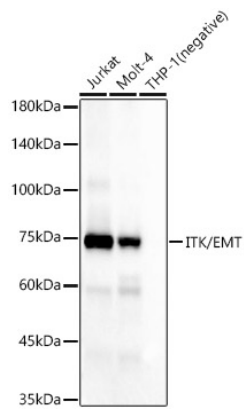
Affinity purification

Storage

Store at -20°C. Avoid freeze / thaw cycles.

Buffer: PBS containing 50% glycerol and 0.05% BSA, preserved with proclin300 or sodium azide (as specified on the Certificate of Analysis), pH 7.3.

Validation Data



Western blot analysis of various lysates, using ITK/EMT Rabbit mAb (A22617) at 1:5000 dilution.

Secondary antibody: HRP-conjugated Goat anti-Rabbit IgG (H+L) (AS014) at 1:10000 dilution.

Lysates/proteins: 25µg per lane.

Blocking buffer: 3% nonfat dry milk in TBST.

Detection: ECL Basic Kit (RM00020).

Exposure time: 180s.