

A22592

Leader in Biomolecular Solutions for Life Science



# ABflo® 488 Rabbit anti-Human JAM-A/CD321/F11R mAb

Catalog No.: A22592

## Basic Information

### Observed MW

### Calculated MW

27kDa/32kDa

### Category

SMab Recombinant Monoclonal Antibody

### Applications

FC

### Cross-Reactivity

Human

### CloneNo number

ARC53966-ABf488

### Conjugate

ABflo® 488. Ex:491nm. Em:516nm.

## Recommended Dilutions

FC 5 µl per 10<sup>6</sup> cells in 100 µl volume

## Contact



[www.abclonal.com](http://www.abclonal.com)

## Background

Tight junctions represent one mode of cell-to-cell adhesion in epithelial or endothelial cell sheets, forming continuous seals around cells and serving as a physical barrier to prevent solutes and water from passing freely through the paracellular space. The protein encoded by this immunoglobulin superfamily gene member is an important regulator of tight junction assembly in epithelia. In addition, the encoded protein can act as (1) a receptor for reovirus, (2) a ligand for the integrin LFA1, involved in leukocyte transmigration, and (3) a platelet receptor. Multiple 5' alternatively spliced variants, encoding the same protein, have been identified but their biological validity has not been established.

## Immunogen Information

### Gene ID

50848

### Swiss Prot

Q9Y624

### Immunogen

Recombinant protein (or fragment). This information is considered to be commercially sensitive.

### Synonyms

JAM; KAT; JAM1; JAMA; JCAM; CD321; PAM-1

## Product Information

### Source

Rabbit

### Isotype

IgG

### Purification

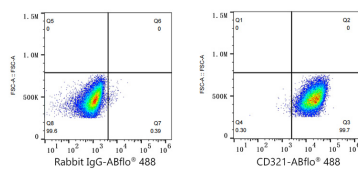
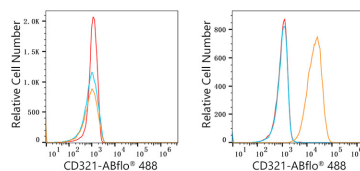
Affinity purification

### Storage

Store at 2-8°C. Avoid freeze.

Buffer: PBS containing 0.2% BSA, preserved with proclin300 or sodium azide (as specified on the Certificate of Analysis), pH 7.3.

## Validation Data



Flow cytometry:  $1 \times 10^6$  U-2 OS cells (negative control, Left) and HT-29 cells (Right) were surface-stained with ABflo® 488 Rabbit anti-Human JAM-A/CD321/F11R mAb (A22592, 5  $\mu$ l/Test, orange line) or ABflo® 488 Rabbit IgG isotype control (A22069, 5  $\mu$ l/Test, blue line). Non-fluorescently stained cells were used as blank control (red line).

Flow cytometry:  $1 \times 10^6$  HT-29 cells were surface-stained with ABflo® 488 Rabbit IgG isotype control (A22069, 5  $\mu$ l/Test, left) or ABflo® 488 Rabbit anti-Human JAM-A/CD321/F11R mAb (A22592, 5  $\mu$ l/Test, right).