

A22560

Leader in Biomolecular Solutions for Life Science



TR β 1/THRB Rabbit mAb

Catalog No.: A22560

Recombinant

Basic Information

Observed MW

53kDa

Calculated MW

53kDa

Category

SMab Recombinant Monoclonal
Antibody

Applications

WB,ELISA

Cross-Reactivity

Human

CloneNo number

ARC56361

Background

The protein encoded by this gene is a nuclear hormone receptor for triiodothyronine. It is one of the several receptors for thyroid hormone, and has been shown to mediate the biological activities of thyroid hormone. Knockout studies in mice suggest that the different receptors, while having certain extent of redundancy, may mediate different functions of thyroid hormone. Mutations in this gene are known to be a cause of generalized thyroid hormone resistance (GTHR), a syndrome characterized by goiter and high levels of circulating thyroid hormone (T3-T4), with normal or slightly elevated thyroid stimulating hormone (TSH). Several alternatively spliced transcript variants encoding the same protein have been observed for this gene.

Recommended Dilutions

WB 1:1000 - 1:5000

ELISA Recommended starting concentration is 1 μ g/mL. Please optimize the concentration based on your specific assay requirements.

Immunogen Information

Gene ID

7068

Swiss Prot

P10828

Immunogen

Recombinant fusion protein containing a sequence corresponding to amino acids 1-91 of human TR β 1/THRB (NP_000452.2).

Synonyms

TRb; GRTH; PRTH; THR1; ERBA2; NR1A2; THRB1; THRB2; TRbeta; THRBeta; TRbeta1; C-ERBA-2; THRBeta1; Thrbeta2; C-ERBA-BETA; TR β 1/THRB

Contact



www.abclonal.com

Product Information

Source

Rabbit

Isotype

IgG

Purification

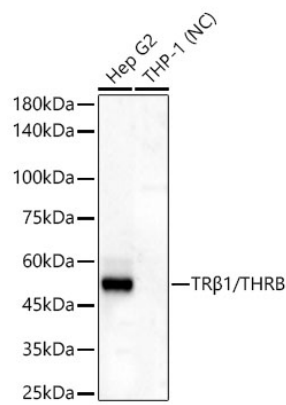
Affinity purification

Storage

Store at -20°C. Avoid freeze / thaw cycles.

Buffer: PBS with 0.09% Sodium azide, 0.05% BSA, 50% glycerol, pH7.3.

Validation Data



Western blot analysis of various lysates, using TRβ1/THRB Rabbit mAb (A22560) at 1:2000 dilution.
 Secondary antibody: HRP-conjugated Goat anti-Rabbit IgG (H+L) (AS014) at 1:10000 dilution.
 Lysates/proteins: 25μg per lane.
 Blocking buffer: 3% nonfat dry milk in TBST.
 Detection: ECL Basic Kit (RM00020).
 Exposure time: 180s.