

A22514

Leader in Biomolecular Solutions for Life Science



# ABflo® 488 Rabbit anti-Human CD68 mAb

Catalog No.: A22514

## Basic Information

---

### Observed MW

Refer to figures

### Calculated MW

37kDa

### Category

SMab Recombinant Monoclonal Antibody

### Applications

FC (intra)

### Cross-Reactivity

Human

### CloneNo number

ARC56633-ABf488

### Conjugate

ABflo® 488. Ex:491nm. Em:516nm.

## Recommended Dilutions

---

**FC (intra)**      5 µl per 10<sup>6</sup> cells in  
100 µl volume

## Contact

---



[www.abclonal.com](http://www.abclonal.com)

## Background

---

This gene encodes a 110-kD transmembrane glycoprotein that is highly expressed by human monocytes and tissue macrophages. It is a member of the lysosomal/endosomal-associated membrane glycoprotein (LAMP) family. The protein primarily localizes to lysosomes and endosomes with a smaller fraction circulating to the cell surface. It is a type I integral membrane protein with a heavily glycosylated extracellular domain and binds to tissue- and organ-specific lectins or selectins. The protein is also a member of the scavenger receptor family. Scavenger receptors typically function to clear cellular debris, promote phagocytosis, and mediate the recruitment and activation of macrophages. Alternative splicing results in multiple transcripts encoding different isoforms.

## Immunogen Information

---

Gene ID	Swiss Prot
968	P34810

### Immunogen

Recombinant fusion protein containing a sequence corresponding to amino acids 22-319 of human CD68 (NP\_001242.2).

### Synonyms

GP110; LAMP4; SCARD1

## Product Information

---

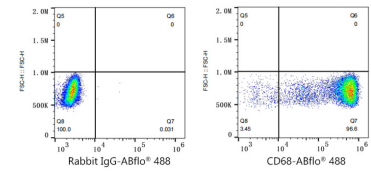
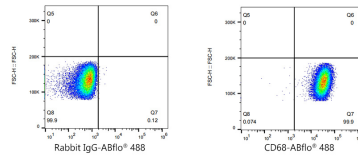
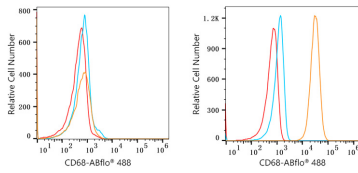
Source	Isotype	Purification
Rabbit	IgG	Affinity purification

### Storage

Store at 2-8°C. Avoid freeze.

Buffer: PBS with 0.03% proclin300,0.2% BSA,pH7.3.

## Validation Data



Flow cytometry:  $1 \times 10^6$  MOLT-4 cells (Low Expression, left) and A-431 cells (right) were intracellularly-stained with ABflo® 488 Rabbit anti-Human CD68 mAb (A22514, 5  $\mu$ l/Test, orange line) or ABflo® 488 Rabbit IgG isotype control (A22069, 5  $\mu$ l/Test, blue line). Non-fluorescently stained cells were used as blank control (red line).

Flow cytometry:  $1 \times 10^6$  A431 cells were intracellularly-stained with ABflo® 488 Rabbit IgG isotype control (A22069, 5  $\mu$ l/Test, left) or ABflo® 488 Rabbit anti-Human CD68 mAb (A22514, 5  $\mu$ l/Test, right).

Flow cytometry:  $1 \times 10^6$  Human PBMC were intracellularly-stained with ABflo® 488 Rabbit IgG isotype control (A22069, 5  $\mu$ l/Test, left) or ABflo® 488 Rabbit anti-Human CD68 mAb (A22514, 5  $\mu$ l/Test, right).