

A22469

Leader in Biomolecular Solutions for Life Science



## [KD Validated] RHOT1/MIRO1 Rabbit mAb

Catalog No.: A22469

Recombinant

### Basic Information

#### Observed MW

75kDa

#### Calculated MW

71kDa

#### Category

SMab Recombinant Monoclonal  
Antibody

#### Applications

WB,IHC-P,ELISA

#### Cross-Reactivity

Human,Mouse,Rat

#### CloneNo number

ARC57606

### Background

Predicted to enable GTP binding activity and GTPase activity. Involved in cellular homeostasis; mitochondrial outer membrane permeabilization; and mitochondrion transport along microtubule. Is integral component of mitochondrial outer membrane.

### Recommended Dilutions

WB 1:1000 - 1:5000

IHC-P 1:100 - 1:500

### Immunogen Information

#### Gene ID

55288

#### Swiss Prot

Q8IXI2

#### Immunogen

Recombinant fusion protein containing a sequence corresponding to amino acids 310-590 of human RHOT1/MIRO1 (NP\_060777.3).

#### Synonyms

ARHT1; MIRO1; MIRO-1; [KO/KD Validated] RHOT1/MIRO1

### Contact



[www.abclonal.com](http://www.abclonal.com)

### Product Information

#### Source

Rabbit

#### Isotype

IgG

#### Purification

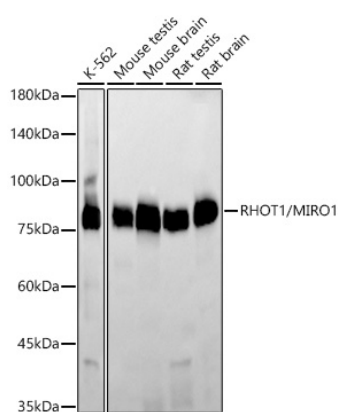
Affinity purification

#### Storage

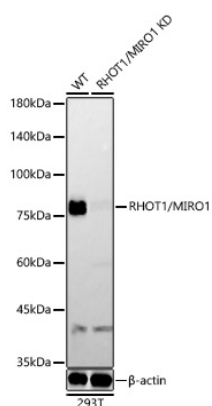
Store at -20°C. Avoid freeze / thaw cycles.

Buffer: PBS with 0.05% proclin300,0.05% BSA,50% glycerol,pH7.3.

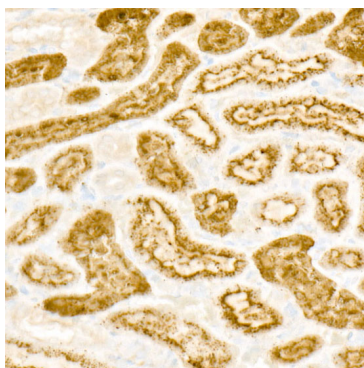
## Validation Data



Western blot analysis of various lysates, using [KD Validated] RHOT1/MIRO1 Rabbit mAb (A22469) at 1:2000 dilution.  
Secondary antibody: HRP Goat Anti-Rabbit IgG (H+L) (AS014) at 1:10000 dilution.  
Lysates/proteins: 25µg per lane.  
Blocking buffer: 3% nonfat dry milk in TBST.  
Detection: ECL Basic Kit (RM00020).  
Exposure time: 60s.



Western blot analysis of lysates from wild type (WT) and RHOT1/MIRO1 knockdown (KD) 293T cells, using [KD Validated] RHOT1/MIRO1 Rabbit mAb (A22469) at 1:2000 dilution.  
Secondary antibody: HRP Goat Anti-Rabbit IgG (H+L) (AS014) at 1:10000 dilution.  
Lysates/proteins: 25µg per lane.  
Blocking buffer: 3% nonfat dry milk in TBST.  
Detection: ECL Basic Kit (RM00020).  
Exposure time: 60s.



Immunohistochemistry analysis of paraffin-embedded rat kidney using [KO Validated] RHOT1/MIRO1 Rabbit mAb (A22469) at dilution of 1:300 (40x lens). Perform high pressure antigen retrieval with 10 mM citrate buffer pH 6.0 before commencing with IHC staining protocol.