

A22447

Leader in Biomolecular Solutions for Life Science



## p44/42 MAPK (Erk1/2) Rabbit mAb

Catalog No.: A22447

Recombinant

7 Publications

### Basic Information

**Observed MW**

42kDa/44kDa

**Calculated MW**

42, 44kDa

**Category**SMab Recombinant Monoclonal  
Antibody**Applications**

WB,IHC-P,ELISA

**Cross-Reactivity**

Human,Mouse,Rat

**CloneNo number**

ARC51163

### Recommended Dilutions

**WB** 1:5000 - 1:10000**IHC-P** 1:50 - 1:200**ELISA** Recommended starting  
concentration is 1  
µg/mL. Please optimize  
the concentration  
based on your specific  
assay requirements.

### Contact

[www.abclonal.com](http://www.abclonal.com)

### Background

This gene encodes a member of the MAP kinase family. MAP kinases, also known as extracellular signal-regulated kinases (ERKs), act as an integration point for multiple biochemical signals, and are involved in a wide variety of cellular processes such as proliferation, differentiation, transcription regulation and development. The activation of this kinase requires its phosphorylation by upstream kinases. Upon activation, this kinase translocates to the nucleus of the stimulated cells, where it phosphorylates nuclear targets. One study also suggests that this protein acts as a transcriptional repressor independent of its kinase activity. The encoded protein has been identified as a moonlighting protein based on its ability to perform mechanistically distinct functions. Two alternatively spliced transcript variants encoding the same protein, but differing in the UTRs, have been reported for this gene. [provided by RefSeq, Jan 2014]

### Immunogen Information

**Gene ID**

5594/5595

**Swiss Prot**

P28482/P27361

**Immunogen**

Synthetic peptide. This information is considered to be commercially sensitive.

**Synonyms**

ERK; ERK-2; ERK2; ERT1; MAPK2; P42MAPK; PRKM1; PRKM2; p38; p40; p41; p41mapk; p42-MAPK; 5594/5595; p44/42 MAPK (Erk1/2)

### Product Information

**Source**

Rabbit

**Isotype**

IgG

**Purification**

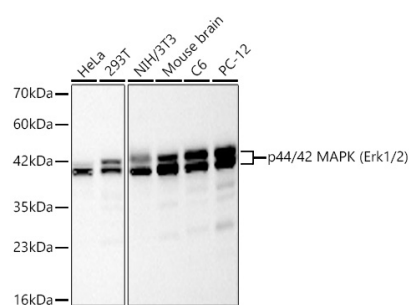
Affinity purification

**Storage**

Store at -20°C. Avoid freeze / thaw cycles.

Buffer: PBS with 0.05% proclin300,0.05% BSA,50% glycerol,pH7.3.

## Validation Data



Western blot analysis of various lysates using p44/42 MAPK (Erk1/2) Rabbit mAb (A22447) at 1:10000 dilution incubated overnight at 4°C.

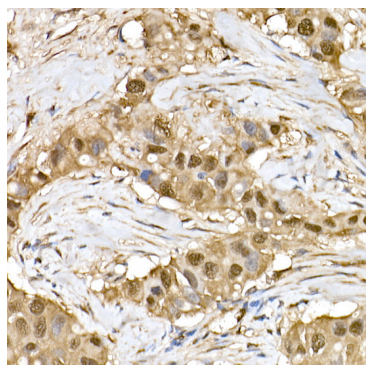
Secondary antibody: HRP-conjugated Goat anti-Rabbit IgG (H+L) (AS014) at 1:10000 dilution.

Lysates/proteins: 25 µg per lane.

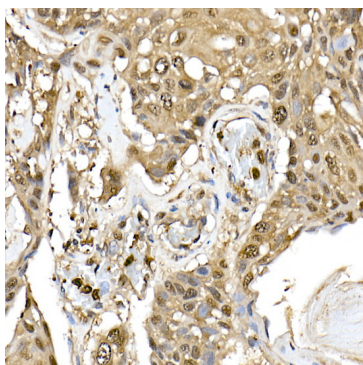
Blocking buffer: 3% nonfat dry milk in TBST.

Detection: ECL Basic Kit (RM00020).

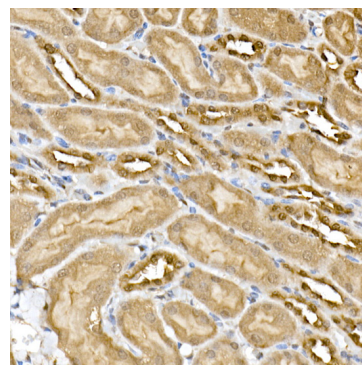
Exposure time: 45s.



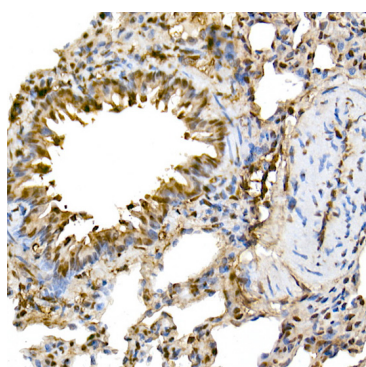
Immunohistochemistry analysis of paraffin-embedded Human breast cancer using ERK1/2 Rabbit mAb (A22447) at dilution of 1:100 (40x lens). High pressure antigen retrieval performed with 0.01M Citrate buffer (pH 6.0) prior to IHC staining.



Immunohistochemistry analysis of paraffin-embedded Human esophageal cancer using ERK1/2 Rabbit mAb (A22447) at dilution of 1:100 (40x lens). High pressure antigen retrieval performed with 0.01M Citrate buffer (pH 6.0) prior to IHC staining.



Immunohistochemistry analysis of paraffin-embedded Mouse kidney using ERK1/2 Rabbit mAb (A22447) at dilution of 1:100 (40x lens). High pressure antigen retrieval performed with 0.01M Citrate buffer (pH 6.0) prior to IHC staining.



Immunohistochemistry analysis of paraffin-embedded Rat lung using ERK1/2 Rabbit mAb (A22447) at dilution of 1:100 (40x lens). High pressure antigen retrieval performed with 0.01M Citrate buffer (pH 6.0) prior to IHC staining.