

A22444

Leader in Biomolecular Solutions for Life Science



FITC/5-FAM/6-FAM Rabbit mAb

Catalog No.: A22444

Recombinant

Basic Information

Observed MW

25kDa/55kDa

Calculated MW

Category

Small Molecule-specific Antibody

Applications

WB, ELISA

Cross-Reactivity

Species independent

CloneNo number

ARC51073

Background

Fluorescein isothiocyanate (FITC) is a fluorochrome dye that absorbs ultraviolet or blue light causing molecules to become excited and emit a visible yellow-green light. FITC is a commonly used marker for antibodies in immunofluorescent techniques since the conjugation of FITC to proteins is relatively easy and does not, in general, destroy the biological activity of the labeled protein. FITC is also widely used as a hapten to label different proteins. It is typically available as a mixture of isomers, fluorescein 5-isothiocyanate (5-FITC) and fluorescein 6-isothiocyanate (6-FITC). FITC is reactive towards nucleophiles including amine and sulfhydryl groups on proteins. CAS number of FITC: 27072-45-3 (mixture); 3326-32-7, 5-isomer; 18861-78-4 (6-isomer). 5-FAM is a single isomer with Ex/Em of 490 nm/520 nm. The single isomer, 6-FAM, contains a carboxylic acid that can be used to react with primary amines via carbodiimide activation of the carboxylic acid. Fluorescein is the most common fluorescent derivatization reagent for labeling biomolecules.

Recommended Dilutions

WB 1:2000 - 1:4800

ELISA 1:500 - 1:2000

Immunogen Information

Gene ID

Swiss Prot

Immunogen

FITC

Synonyms

Contact



www.abclonal.com

Product Information

Source

Rabbit

Isotype

IgG

Purification

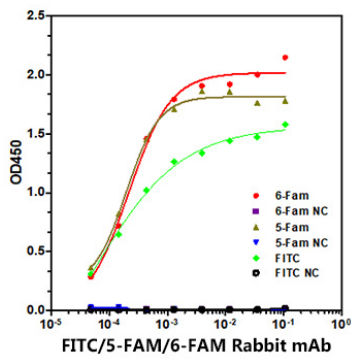
Affinity purification

Storage

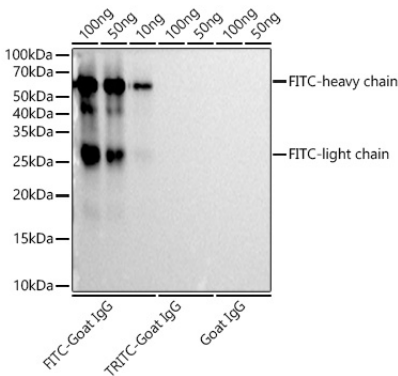
Store at -20°C. Avoid freeze / thaw cycles.

Buffer: PBS with 0.05% proclin300, 0.05% BSA, 50% glycerol, pH7.3.

Validation Data



Immobilized biotin-6 Fam, biotin-5 Fam, biotin-FITC, at 1 µg/mL (25 µL/well), of which EC₅₀ ranges are 0.18-0.40 ng/mL, 0.19-0.29 ng/mL and 0.15-0.29 ng/mL ,can bind anti 6-Fam/ 5-Fam/ FITC mAb (A22444), respectively.



The FITC rabbit monoclonal antibody (A22444) are tested in Western blot against FITC Goat IgG (AS001),TRITC Goat IgG (AS026) and Goat IgG (AS071) at 1:4000 dilution. Secondary antibody: HRP-conjugated Goat anti-Rabbit IgG (H+L) (AS014) at 1:10000 dilution.
Lysates/proteins: 25µg per lane.
Blocking buffer: 3% nonfat dry milk in TBST.
Detection: ECL Basic Kit (RM00020).
Exposure time: 10s.