

A22439

Leader in Biomolecular Solutions for Life Science



Ferritin Heavy Chain Rabbit mAb

Catalog No.: A22439 **Recombinant**

Basic Information

Observed MW

Refer to figures

Calculated MW

21kDa

Category

Monoclonal Antibody

Applications

IHC-P, ELISA

Cross-Reactivity

Human

CloneNo number

ARC2665

Background

This gene encodes the heavy subunit of ferritin, the major intracellular iron storage protein in prokaryotes and eukaryotes. It is composed of 24 subunits of the heavy and light ferritin chains. Variation in ferritin subunit composition may affect the rates of iron uptake and release in different tissues. A major function of ferritin is the storage of iron in a soluble and nontoxic state. Defects in ferritin proteins are associated with several neurodegenerative diseases. This gene has multiple pseudogenes. Several alternatively spliced transcript variants have been observed, but their biological validity has not been determined.

Recommended Dilutions

IHC-P 1:100 - 1:400

ELISA Recommended starting concentration is 1 µg/mL. Please optimize the concentration based on your specific assay requirements.

Immunogen Information

Gene ID

2495

Swiss Prot

P02794

Immunogen

Synthetic peptide. This information is considered to be commercially sensitive.

Synonyms

FHC; FTH; HFE5; PLIF; FTHL6; PIG15; Ferritin Heavy Chain

Contact

 www.abclonal.com

Product Information

Source

Rabbit

Isotype

IgG

Purification

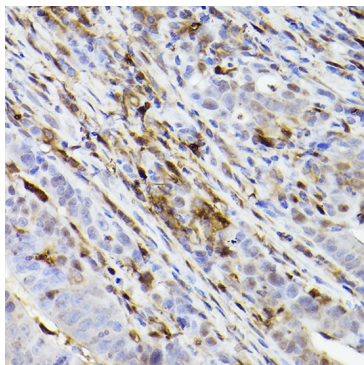
Affinity purification

Storage

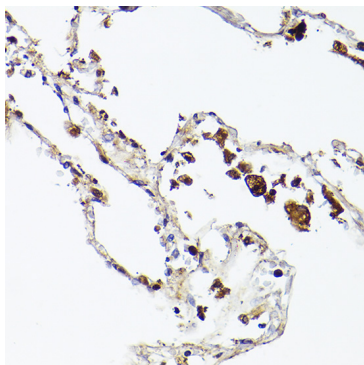
Store at -20°C. Avoid freeze / thaw cycles.

Buffer: PBS containing 50% glycerol and 0.05% BSA, preserved with proclin300 or sodium azide (as specified on the Certificate of Analysis), pH 7.3.

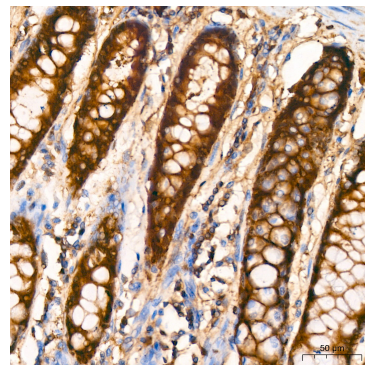
Validation Data



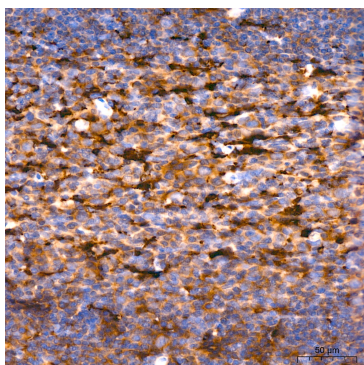
Immunohistochemistry analysis of paraffin-embedded Human colon carcinoma using Ferritin Heavy Chain Rabbit mAb (A22439) at dilution of 1:100 (40x lens). High pressure antigen retrieval performed with 0.01M Citrate buffer (pH 6.0) prior to IHC staining.



Immunohistochemistry analysis of paraffin-embedded Human lung using Ferritin Heavy Chain Rabbit mAb (A22439) at dilution of 1:100 (40x lens). High pressure antigen retrieval performed with 0.01M Citrate buffer (pH 6.0) prior to IHC staining.



Immunohistochemistry analysis of paraffin-embedded Human colon tissue using Ferritin Heavy Chain Rabbit mAb (A22439) at a dilution of 1:200 (40x lens). High pressure antigen retrieval performed with 0.01M Citrate buffer (pH 6.0) prior to IHC staining.



Immunohistochemistry analysis of paraffin-embedded Human tonsil tissue using Ferritin Heavy Chain Rabbit mAb (A22439) at a dilution of 1:200 (40x lens). High pressure antigen retrieval performed with 0.01M Citrate buffer (pH 6.0) prior to IHC staining.