

A22425

Leader in Biomolecular Solutions for Life Science



IKK β Rabbit mAb

Catalog No.: A22425

Recombinant

Basic Information

Observed MW

Refer to figures

Calculated MW

87kDa

Category

SMab Recombinant Monoclonal
Antibody

Applications

WB,IHC-P,ELISA

Cross-Reactivity

Human

CloneNo number

ARC0085

Background

The protein encoded by this gene phosphorylates the inhibitor in the inhibitor/NF-kappa-B complex, causing dissociation of the inhibitor and activation of NF-kappa-B. The encoded protein itself is found in a complex of proteins. Several transcript variants, some protein-coding and some not, have been found for this gene.

Recommended Dilutions

WB 1:500 - 1:2000 IHC-P

Immunogen Information

Gene ID

3551

Swiss Prot

O14920

Immunogen

A synthetic peptide corresponding to a sequence within amino acids 1-100 of human IKK β (O14920).

Synonyms

IKK2; IKKB; IMD15; IMD15A; IMD15B; NFKB1KB; IKK-beta; IKK β

Contact



www.abclonal.com

Product Information

Source

Rabbit

Isotype

IgG

Purification

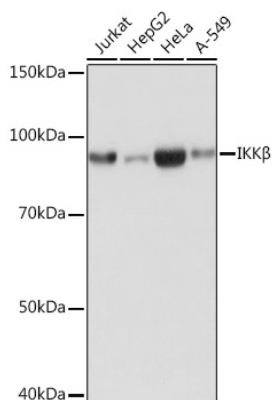
Affinity purification

Storage

Store at -20°C. Avoid freeze / thaw cycles.

Buffer: PBS with 0.02% sodium azide, 0.05% BSA, 50% glycerol, pH7.3.

Validation Data



Western blot analysis of various lysates using IKK β Rabbit mAb (A22425) at 1:1000 dilution.

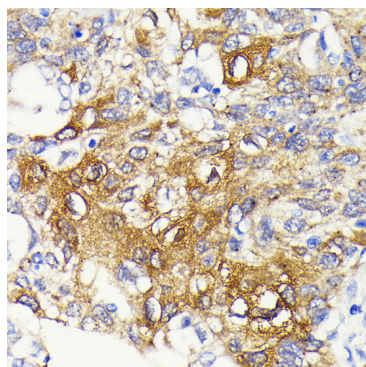
Secondary antibody: HRP Goat Anti-Rabbit IgG (H+L) (AS014) at 1:10000 dilution.

Lysates/proteins: 25 μ g per lane.

Blocking buffer: 3% nonfat dry milk in TBST.

Detection: ECL Basic Kit (RM00020).

Exposure time: 1s.



Immunohistochemistry analysis of paraffin-embedded human lung cancer using IKK β Rabbit mAb (A22425) at dilution of 1:100 (40x lens). Perform microwave antigen retrieval with 10 mM PBS buffer pH 7.2 before commencing with IHC staining protocol.