

A22415

Leader in Biomolecular Solutions for Life Science



## PGP9.5/UCL1 Rabbit mAb

Catalog No.: A22415

Recombinant

### Basic Information

#### Observed MW

27kDa

#### Calculated MW

25kDa

#### Category

SMab Recombinant Monoclonal  
Antibody

#### Applications

WB,IHC-P,IF/ICC,ELISA

#### Cross-Reactivity

Human,Mouse,Rat

#### CloneNo number

ARC50372

### Background

The protein encoded by this gene belongs to the peptidase C12 family. This enzyme is a thiol protease that hydrolyzes a peptide bond at the C-terminal glycine of ubiquitin. This gene is specifically expressed in the neurons and in cells of the diffuse neuroendocrine system. Mutations in this gene may be associated with Parkinson disease.

### Recommended Dilutions

**WB** 1:500 - 1:1000

**IHC-P** 1:50 - 1:200

**IF/ICC** 1:50 - 1:200

**ELISA** Recommended starting concentration is 1 µg/mL. Please optimize the concentration based on your specific assay requirements.

### Immunogen Information

#### Gene ID

7345

#### Swiss Prot

P09936

#### Immunogen

Recombinant fusion protein containing a sequence corresponding to amino acids 1-220 of human PGP9.5/UCL1 (NP\_004172.2).

#### Synonyms

NDGOA; PARK5; PGP95; SPG79; PGP9.5; SPG79A; UCHL-1; Uch-L1; HEL-117; PGP 9.5; HEL-S-53; PGP9.5/UCL1

### Product Information

#### Source

Rabbit

#### Isotype

IgG

#### Purification

Affinity purification

#### Storage

Store at -20°C. Avoid freeze / thaw cycles.

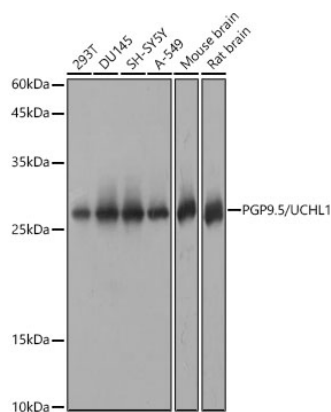
Buffer: PBS with 0.05% proclin300,0.05% BSA,50% glycerol,pH7.3.

### Contact



[www.abclonal.com](http://www.abclonal.com)

## Validation Data



Western blot analysis of various lysates, using PGP9.5/UCLH1 Rabbit mAb (A22415) at 1:1000 dilution.

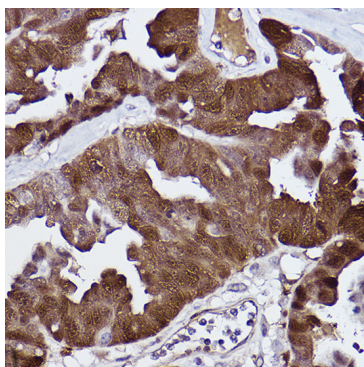
Secondary antibody: HRP-conjugated Goat anti-Rabbit IgG (H+L) (AS014) at 1:10000 dilution.

Lysates/proteins: 25µg per lane.

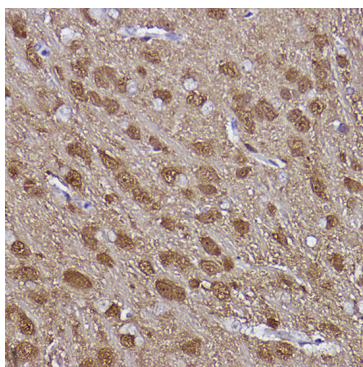
Blocking buffer: 3% nonfat dry milk in TBST.

Detection: ECL Basic Kit (RM00020).

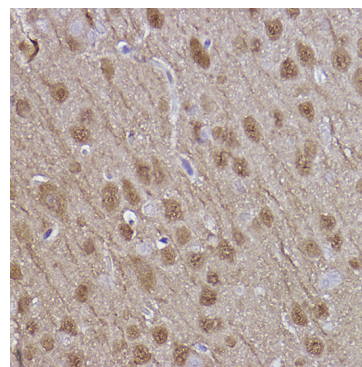
Exposure time: 1s.



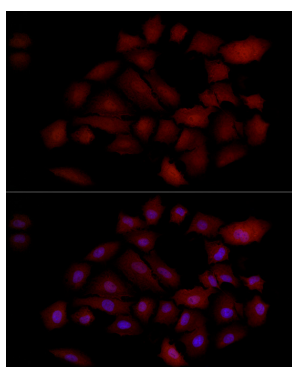
Immunohistochemistry analysis of paraffin-embedded Human oophoroma using PGP9.5/UCLH1 Rabbit mAb (A22415) at dilution of 1:100 (40x lens). High pressure antigen retrieval performed with 0.01M Citrate Bufferr (pH 6.0) prior to IHC staining.



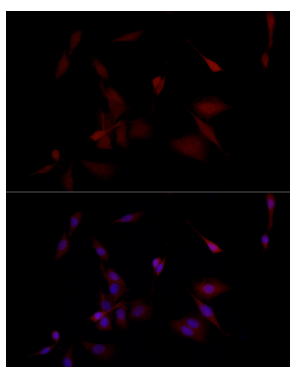
Immunohistochemistry analysis of paraffin-embedded Mouse brain using PGP9.5/UCLH1 Rabbit mAb (A22415) at dilution of 1:100 (40x lens). High pressure antigen retrieval performed with 0.01M Citrate Bufferr (pH 6.0) prior to IHC staining.



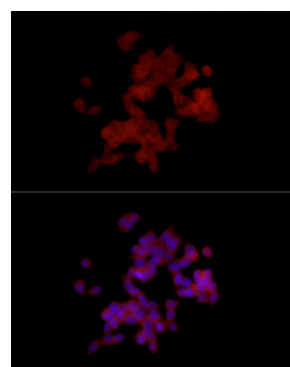
Immunohistochemistry analysis of paraffin-embedded Rat brain using PGP9.5/UCLH1 Rabbit mAb (A22415) at dilution of 1:100 (40x lens). High pressure antigen retrieval performed with 0.01M Citrate Bufferr (pH 6.0) prior to IHC staining.



Immunofluorescence analysis of A-549 cells using PGP9.5/UCLH1 Rabbit mAb (A22415) at dilution of 1:100 (40x lens). Secondary antibody: Cy3-conjugated Goat anti-Rabbit IgG (H+L) (AS007) at 1:500 dilution. Blue: DAPI for nuclear staining.



Immunofluorescence analysis of PC-12 cells using PGP9.5/UCLH1 Rabbit mAb (A22415) at dilution of 1:100 (40x lens). Secondary antibody: Cy3-conjugated Goat anti-Rabbit IgG (H+L) (AS007) at 1:500 dilution. Blue: DAPI for nuclear staining.



Immunofluorescence analysis of SH-SY5Y cells using PGP9.5/UCLH1 Rabbit mAb (A22415) at dilution of 1:100 (40x lens). Secondary antibody: Cy3-conjugated Goat anti-Rabbit IgG (H+L) (AS007) at 1:500 dilution. Blue: DAPI for nuclear staining.