

A22327

Leader in Biomolecular Solutions for Life Science



## LRP5 Rabbit mAb

Catalog No.: A22327

Recombinant

1 Publications

### Basic Information

#### Observed MW

200kDa

#### Calculated MW

179kDa

#### Category

SMab Recombinant Monoclonal  
Antibody

#### Applications

WB,ELISA

#### Cross-Reactivity

Human,Mouse

#### CloneNo number

ARC52451

### Background

This gene encodes a transmembrane low-density lipoprotein receptor that binds and internalizes ligands in the process of receptor-mediated endocytosis. This protein also acts as a co-receptor with Frizzled protein family members for transducing signals by Wnt proteins and was originally cloned on the basis of its association with type 1 diabetes mellitus in humans. This protein plays a key role in skeletal homeostasis and many bone density related diseases are caused by mutations in this gene. Mutations in this gene also cause familial exudative vitreoretinopathy. Alternative splicing results in multiple transcript variants.

### Recommended Dilutions

**WB** 1:500 - 1:1000

**ELISA** Recommended starting concentration is 1 µg/mL. Please optimize the concentration based on your specific assay requirements.

### Immunogen Information

**Gene ID**  
4041

**Swiss Prot**  
O75197

#### Immunogen

Synthetic peptide. This information is considered to be commercially sensitive.

#### Synonyms

HBM; LR3; OPS; EVR1; EVR4; LRP7; OPPG; BMND1; LRP-5; LRP-7; OPTA1; PCLD4; VBCH2; LRP5

### Contact

 [www.abclonal.com](http://www.abclonal.com)

### Product Information

**Source**  
Rabbit

**Isotype**  
IgG

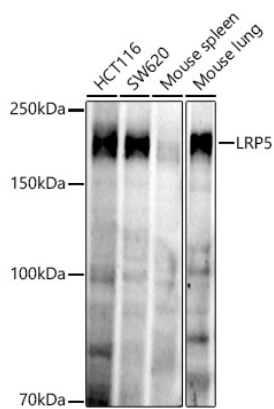
**Purification**  
Affinity purification

#### Storage

Store at -20°C. Avoid freeze / thaw cycles.

Buffer: PBS with 0.09% Sodium azide,0.05% BSA,50% glycerol,pH7.3.

## Validation Data



Western blot analysis of various lysates, using LRP5 Rabbit mAb (A22327) at 1:1000 dilution.  
Secondary antibody: HRP-conjugated Goat anti-Rabbit IgG (H+L) (AS014) at 1:10000 dilution.  
Lysates/proteins: 25µg per lane.  
Blocking buffer: 3% nonfat dry milk in TBST.  
Detection: ECL Enhanced Kit (RM00021).  
Exposure time: 180s.