

A22292

Leader in Biomolecular Solutions for Life Science



# LAT1/SLC7A5 Rabbit mAb

Catalog No.: A22292

Recombinant

## Basic Information

### Observed MW

39kDa

### Calculated MW

55kDa

### Category

SMab Recombinant Monoclonal  
Antibody

### Applications

WB,IHC-P,ELISA

### Cross-Reactivity

Human,Mouse

### CloneNo number

ARC56924

## Background

Enables L-leucine transmembrane transporter activity; L-tryptophan transmembrane transporter activity; and thyroid hormone transmembrane transporter activity. Involved in carboxylic acid transport; thyroid hormone transport; and xenobiotic transport. Located in cytosol; intracellular membrane-bounded organelle; and plasma membrane. Is integral component of membrane. Part of amino acid transport complex; apical plasma membrane; and microvillus membrane.

## Recommended Dilutions

WB 1:500 - 1:1000

IHC-P 1:500 - 1:1000

## Immunogen Information

### Gene ID

8140

### Swiss Prot

Q01650

### Immunogen

A synthetic peptide corresponding to a sequence within amino acids 200-300 of human LAT1/SLC7A5 (NP\_003477.4).

### Synonyms

E16; CD98; LAT1; 4F2LC; MPE16; D16S469E; LAT1/SLC7A5

## Contact



[www.abclonal.com](http://www.abclonal.com)

## Product Information

### Source

Rabbit

### Isotype

IgG

### Purification

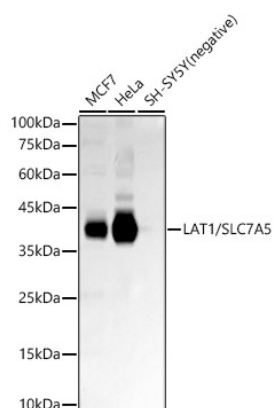
Affinity purification

### Storage

Store at -20°C. Avoid freeze / thaw cycles.

Buffer: PBS with 0.05% proclin300,0.05% BSA,50% glycerol,pH7.3.

## Validation Data



Western blot analysis of various lysates, using LAT1/SLC7A5 Rabbit mAb (A22292) at 1:1000 dilution.

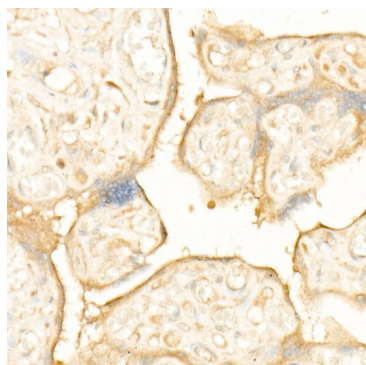
Secondary antibody: HRP-conjugated Goat anti-Rabbit IgG (H+L) (AS014) at 1:10000 dilution.

Lysates/proteins: 25µg per lane.

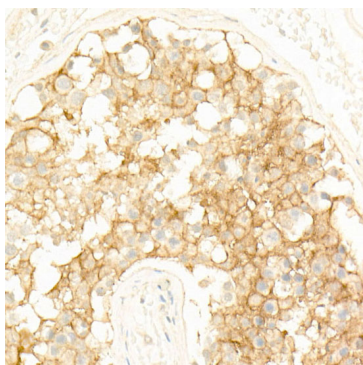
Blocking buffer: 3% nonfat dry milk in TBST.

Detection: ECL Basic Kit (RM00020).

Exposure time: 180s.



Immunohistochemistry analysis of paraffin-embedded Human placenta using LAT1/SLC7A5 Rabbit mAb (A22292) at dilution of 1:900 (40x lens). High pressure antigen retrieval performed with 0.01M Citrate Bufferr (pH 6.0) prior to IHC staining.



Immunohistochemistry analysis of paraffin-embedded Human testis using LAT1/SLC7A5 Rabbit mAb (A22292) at dilution of 1:900 (40x lens). High pressure antigen retrieval performed with 0.01M Citrate Bufferr (pH 6.0) prior to IHC staining.