

A22233

Leader in Biomolecular Solutions for Life Science



Giantin Rabbit pAb

Catalog No.: A22233

Basic Information

Observed MW

376kDa

Calculated MW

376kDa

Category

Polyclonal Antibody

Applications

WB,IF/ICC,ELISA

Cross-Reactivity

Human

Background

Enables RNA binding activity. Involved in protein localization to pericentriolar material. Located in Golgi apparatus and endoplasmic reticulum-Golgi intermediate compartment.

Recommended Dilutions

WB 1:500 - 1:1000

IF/ICC 1:50 - 1:200

ELISA Recommended starting concentration is 1 µg/mL. Please optimize the concentration based on your specific assay requirements.

Immunogen Information

Gene ID

2804

Swiss Prot

Q14789

Immunogen

Recombinant fusion protein containing a sequence corresponding to amino acids 1123-1302 of human Giantin (NP_004478.3).

Synonyms

GCP; GCP372; GOLIM1; Giantin

Contact



www.abclonal.com

Product Information

Source

Rabbit

Isotype

IgG

Purification

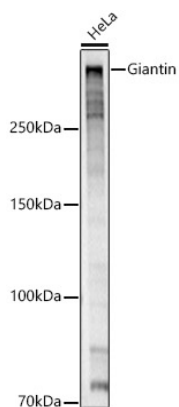
Affinity purification

Storage

Store at -20°C. Avoid freeze / thaw cycles.

Buffer: PBS with 0.05% proclin300,50% glycerol,pH7.3.

Validation Data



Western blot analysis of lysates from HeLa cells, using Giantin Rabbit pAb (A22233) at 1:1000 dilution.

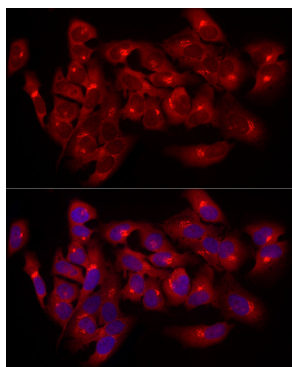
Secondary antibody: HRP-conjugated Goat anti-Rabbit IgG (H+L) (AS014) at 1:10000 dilution.

Lysates/proteins: 25µg per lane.

Blocking buffer: 3% nonfat dry milk in TBST.

Detection: ECL Basic Kit (RM00020).

Exposure time: 20s.



Immunofluorescence analysis of HeLa cells using Giantin Rabbit pAb (A22233) at dilution of 1:100 (40x lens). Secondary antibody: Cy3-conjugated Goat anti-Rabbit IgG (H+L) (AS007) at 1:500 dilution. Blue: DAPI for nuclear staining.