

A22229

Leader in Biomolecular Solutions for Life Science



# CYP3A4 Rabbit mAb

Catalog No.: A22229

Recombinant

## Basic Information

### Observed MW

50kDa

### Calculated MW

57kDa

### Category

SMab Recombinant Monoclonal  
Antibody

### Applications

WB,IF/ICC,ELISA

### Cross-Reactivity

Human

### CloneNo number

ARC52796

## Recommended Dilutions

WB 1:2000 - 1:12000

IF/ICC 1:100 - 1:800

ELISA Recommended starting  
concentration is 1  
µg/mL. Please optimize  
the concentration  
based on your specific  
assay requirements.

## Contact

 [www.abclonal.com](http://www.abclonal.com)

## Background

This gene encodes a member of the cytochrome P450 superfamily of enzymes. The cytochrome P450 proteins are monooxygenases that catalyze many reactions involved in drug metabolism and synthesis of cholesterol, steroids and other lipids. This protein localizes to the endoplasmic reticulum and its expression is induced by glucocorticoids and some pharmacological agents. This enzyme is involved in the metabolism of approximately half the drugs in use today, including acetaminophen, codeine, cyclosporin A, diazepam, erythromycin, and chloroquine. The enzyme also metabolizes some steroids and carcinogens. This gene is part of a cluster of cytochrome P450 genes on chromosome 7q21.1. Previously another CYP3A gene, CYP3A3, was thought to exist; however, it is now thought that this sequence represents a transcript variant of CYP3A4. Alternatively spliced transcript variants encoding different isoforms have been identified.

## Immunogen Information

### Gene ID

1576

### Swiss Prot

P08684

### Immunogen

Synthetic peptide. This information is considered to be commercially sensitive.

### Synonyms

HLP; CP33; CP34; CYP3A; NF-25; VDDR3; CYP3A3; P450C3; CYP3A3; CYP3A4; P450PCN1; CYP3A4

## Product Information

### Source

Rabbit

### Isotype

IgG

### Purification

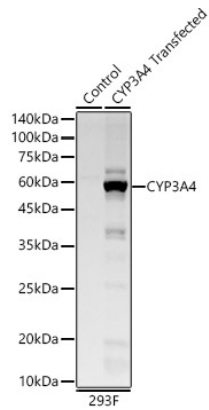
Affinity purification

### Storage

Store at -20°C. Avoid freeze / thaw cycles.

Buffer: PBS containing 50% glycerol and 0.05% BSA, preserved with proclin300 or sodium azide (as specified on the Certificate of Analysis), pH 7.3.

## Validation Data



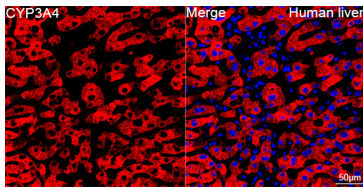
Western blot analysis of lysates from wild type (WT) and 293F cells transfected with CYP3A4 using CYP3A4 Rabbit mAb (A22229) at 1:2000 dilution.  
Secondary antibody: HRP-conjugated Goat anti-Rabbit IgG (H+L) (AS014) at 1:10000 dilution.

Lysates/proteins: 25µg per lane.

Blocking buffer: 3% nonfat dry milk in TBST.

Detection: ECL Basic Kit (RM00020).

Exposure time: 3s.



Confocal imaging of paraffin-embedded Human liver tissue using CYP3A4 Rabbit mAb (A22229, dilution 1:200) followed by a further incubation with Cy3 Goat Anti-Rabbit IgG (H+L) (AS007, dilution 1:500) (Red). DAPI was used for nuclear staining (Blue). High pressure antigen retrieval performed with 0.01M Citrate Buffer (pH 6.0) prior to IF staining. Objective: 40x.