

A2221

Leader in Biomolecular Solutions for Life Science



CHD3 Rabbit pAb

Catalog No.: A2221

1 Publications

Basic Information

Observed MW

280kDa

Calculated MW

227kDa

Category

Polyclonal Antibody

Applications

WB, ELISA

Cross-Reactivity

Human, Mouse, Rat

Background

This gene encodes a member of the CHD family of proteins which are characterized by the presence of chromo (chromatin organization modifier) domains and SNF2-related helicase/ATPase domains. This protein is one of the components of a histone deacetylase complex referred to as the Mi-2/NuRD complex which participates in the remodeling of chromatin by deacetylating histones. Chromatin remodeling is essential for many processes including transcription. Autoantibodies against this protein are found in a subset of patients with dermatomyositis. Three alternatively spliced transcripts encoding different isoforms have been described.

Recommended Dilutions

WB 1:200 - 1:1000

Immunogen Information

Gene ID

1107

Swiss Prot

Q12873

Immunogen

A synthetic peptide corresponding to a sequence within amino acids 1900-2000 of human CHD3 (NP_001005273.1).

Synonyms

ZFH; Mi-2a; SNIBCPS; Mi2-ALPHA; CHD3

Contact



www.abclonal.com

Product Information

Source

Rabbit

Isotype

IgG

Purification

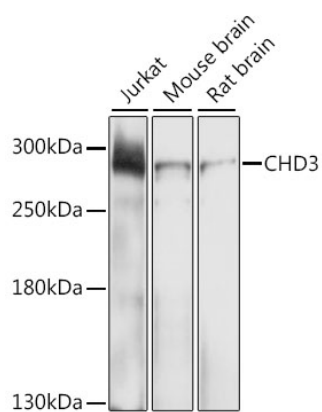
Affinity purification

Storage

Store at -20°C. Avoid freeze / thaw cycles.

Buffer: PBS with 0.02% sodium azide, 50% glycerol, pH 7.3.

Validation Data



Western blot analysis of extracts of various cell lines, using CHD3 antibody (A2221) at 1:1000 dilution.

Secondary antibody: HRP Goat Anti-Rabbit IgG (H+L) (AS014) at 1:10000 dilution.

Lysates/proteins: 25µg per lane.

Blocking buffer: 3% nonfat dry milk in TBST.

Detection: ECL Enhanced Kit (RM00021).

Exposure time: 30s.