

A22201

Leader in Biomolecular Solutions for Life Science



## DUSP1/MKP1 Rabbit mAb

Catalog No.: A22201

Recombinant

### Basic Information

#### Observed MW

39kDa

#### Calculated MW

39kDa

#### Category

SMab Recombinant Monoclonal  
Antibody

#### Applications

WB,ELISA

#### Cross-Reactivity

Human

#### CloneNo number

ARC56245

### Background

The protein encoded by this gene is a phosphatase with dual specificity for tyrosine and threonine. The encoded protein can dephosphorylate MAP kinase MAPK1/ERK2, which results in its involvement in several cellular processes. This protein appears to play an important role in the human cellular response to environmental stress as well as in the negative regulation of cellular proliferation. Finally, the encoded protein can make some solid tumors resistant to both chemotherapy and radiotherapy, making it a target for cancer therapy.

### Recommended Dilutions

WB 1:1000 - 1:5000

### Immunogen Information

#### Gene ID

1843

#### Swiss Prot

P28562

#### Immunogen

A synthetic peptide corresponding to a sequence within amino acids 100-200 of human DUSP1/MKP1 (NP\_004408.1).

#### Synonyms

HVH1; MKP1; CL100; MKP-1; PTPN10; DUSP1/MKP1

### Contact



[www.abclonal.com](http://www.abclonal.com)

### Product Information

#### Source

Rabbit

#### Isotype

IgG

#### Purification

Affinity purification

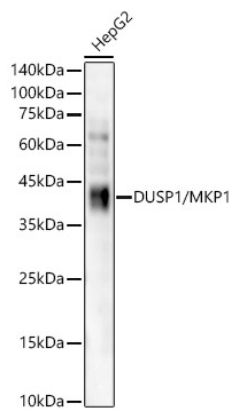
#### Storage

Store at -20°C. Avoid freeze / thaw cycles.

Buffer: PBS with 0.05% proclin300,0.05% BSA,50% glycerol,pH7.3.

## Validation Data

---



Western blot analysis of HepG2, using DUSP1/MKP1 antibody (A22201) at 1:2000 dilution.  
Secondary antibody: HRP Goat Anti-Rabbit IgG (H+L) (AS014) at 1:10000 dilution.  
Lysates/proteins: 25µg per lane.  
Blocking buffer: 3% nonfat dry milk in TBST.  
Detection: ECL Enhanced Kit (RM00021).  
Exposure time: 180s.