

A22119

Leader in Biomolecular Solutions for Life Science



## RGL2 Rabbit pAb

Catalog No.: A22119

### Basic Information

#### Observed MW

60kDa

#### Calculated MW

60kDa

#### Category

Polyclonal Antibody

#### Applications

WB, ELISA

#### Cross-Reactivity

Arabidopsis thaliana

### Background

Encodes a DELLA protein, a member of the GRAS superfamily of putative transcription factors. DELLA proteins restrain the cell proliferation and expansion that drives plant growth. Negative regulator of the response to GA in controlling seed germination. GA triggers the degradation of RGL2 protein in a process blocked by both proteasome inhibitors and serine/threonine phosphatase inhibitors. The protein undergoes degradation in response to GA via the 26S proteasome. RGL2 may be involved in reducing ROS accumulation in response to stress by up-regulating the transcription of superoxide dismutases. Rapidly degraded in response to GA. Regulates GA-promoted seed germination. Involved in flower and fruit development.

### Recommended Dilutions

**WB** 1:1000 - 1:5000

**ELISA** Recommended starting concentration is 1 µg/mL. Please optimize the concentration based on your specific assay requirements.

### Immunogen Information

#### Gene ID

821251

#### Swiss Prot

Q8GXW1

#### Immunogen

Recombinant protein (or fragment). This information is considered to be commercially sensitive.

#### Synonyms

RGA-like 2; T21P5.13; T21P5\_13; RGL2

### Contact

 [www.abclonal.com](http://www.abclonal.com)

### Product Information

#### Source

Rabbit

#### Isotype

IgG

#### Purification

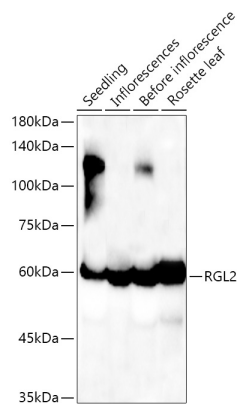
Affinity purification

#### Storage

Store at -20°C. Avoid freeze / thaw cycles.

Buffer: PBS containing 50% glycerol, preserved with proclin300 or sodium azide (as specified on the Certificate of Analysis), pH 7.3.

## Validation Data



Western blot analysis of various tissues from *Arabidopsis thaliana*, using RGL2 Rabbit pAb (A22119) at 1:1000 dilution.

Secondary antibody: HRP-conjugated Goat anti-Rabbit IgG (H+L) (AS014) at 1:10000 dilution.

Lysates / proteins: 25 µg per lane.

Blocking buffer: 3 % nonfat dry milk in TBST.

Detection: ECL Enhanced Kit (RM00021).

Exposure time: 60s.