

A22106

Leader in Biomolecular Solutions for Life Science



COP1 Rabbit pAb

Catalog No.: A22106

Basic Information

Observed MW

102kDa

Calculated MW

80kDa

Category

Polyclonal Antibody

Applications

WB, ELISA

Cross-Reactivity

Human

Background

Enables ubiquitin protein ligase activity. Involved in positive regulation of proteasomal ubiquitin-dependent protein catabolic process; proteasome-mediated ubiquitin-dependent protein catabolic process; and response to ionizing radiation. Part of Cul4A-RING E3 ubiquitin ligase complex.

Recommended Dilutions

WB 1:500 - 1:1000

ELISA Recommended starting concentration is 1 µg/mL. Please optimize the concentration based on your specific assay requirements.

Immunogen Information

Gene ID

64326

Swiss Prot

Q8NHY2

Immunogen

Recombinant protein (or fragment). This information is considered to be commercially sensitive.

Synonyms

FAP78; RFWD2; CFAP78; RNF200; COP1

Contact



www.abclonal.com

Product Information

Source

Rabbit

Isotype

IgG

Purification

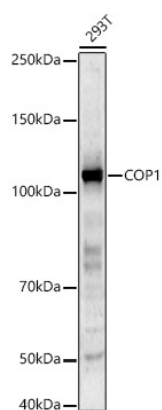
Affinity purification

Storage

Store at -20°C. Avoid freeze / thaw cycles.

Buffer: PBS containing 50% glycerol, preserved with proclin300 or sodium azide (as specified on the Certificate of Analysis), pH 7.3.

Validation Data



Western blot analysis of lysates from 293T cells, using COP1 Rabbit pAb (A22106) at 1:600 dilution.

Secondary antibody: HRP-conjugated Goat anti-Rabbit IgG (H+L) (AS014) at 1:10000 dilution.

Lysates/proteins: 25µg per lane.

Blocking buffer: 3% nonfat dry milk in TBST.

Detection: ECL Basic Kit (RM00020).

Exposure time: 90s.