

A22069

Leader in Biomolecular Solutions for Life Science



ABflo® 488 Rabbit IgG isotype control

Catalog No.: A22069

Basic Information

Observed MW

Calculated MW

Category

SMab Recombinant Monoclonal Antibody

Applications

FC

Cross-Reactivity

CloneNo number

ARC5105-10-ABf488

Conjugate

ABflo® 488. Ex:491nm. Em:516nm.

Recommended Dilutions

FC 5 µl per 10⁶ cells in
100 µl volume

Contact



www.abclonal.com

Background

The isotype of a primary antibody and the application it is being used in can result in background staining. Primary antibody background noise can be caused by binding to Fc receptors on target cells; by non-specific interactions with cellular proteins, carbohydrates, and lipids; or by cell autofluorescence. Isotype control antibodies can act as negative controls to help differentiate non-specific background signal from specific antibody signal because they have no relevant specificity to a target antigen. An isotype control antibody should have the same immunoglobulin type and be used at the same concentration as the test antibody.

Immunogen Information

Gene ID

Swiss Prot

Immunogen

Synthetic peptide. This information is considered to be commercially sensitive.

Synonyms

Product Information

Source

Rabbit

Isotype

IgG

Purification

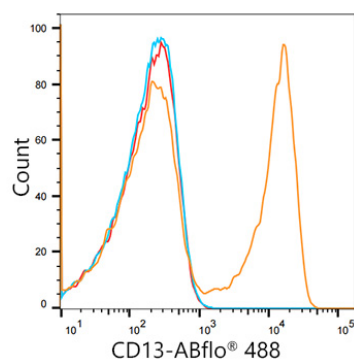
Affinity purification

Storage

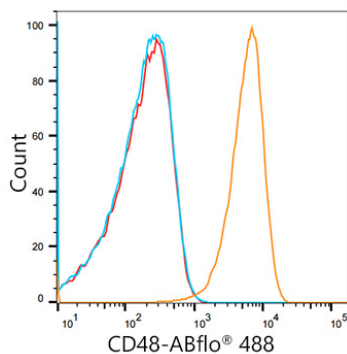
Store at 2-8°C. Avoid freeze.

Buffer: PBS with 0.03% proclin300, 0.2% BSA, pH7.3.

Validation Data



Flow cytometry: 1×10^6 Human PBMC(negative control) were surface-stained with ABflo® 488 Rabbit anti-Human CD13/ANPEP mAb(A21945,5 μ l/Test,orange line) or ABflo® 488 Rabbit IgG isotype control (A22069,5 μ l/Test,blue line).Non-fluorescently stained Human PBMC were used as blank control (red line).



Flow cytometry: 1×10^6 Human PBMC(negative control) were surface-stained with ABflo® 488 Rabbit anti-Human CD48 mAb(A21945,5 μ l/Test,orange line) or ABflo® 488 Rabbit IgG isotype control (A22069,5 μ l/Test,blue line).Non-fluorescently stained Human PBMC were used as blank control (red line).