

A22049

Leader in Biomolecular Solutions for Life Science



GLP2R Rabbit mAb

Catalog No.: A22049 **Recombinant**

Basic Information

Observed MW

70kDa

Calculated MW

63kDa

Category

SMab Recombinant Monoclonal Antibody

Applications

WB,ELISA

Cross-Reactivity

Human,Mouse,Rat

CloneNo number

ARC54969

Background

This gene encodes a G protein-coupled receptor that is closely related to the glucagon receptor and binds to glucagon-like peptide-2 (GLP2). Signalling through GLP2 stimulates intestinal growth and increases villus height in the small intestine, concomitant with increased crypt cell proliferation and decreased enterocyte apoptosis.

Recommended Dilutions

WB 1:2000 - 1:20000

Immunogen Information

Gene ID

9340

Swiss Prot

O95838

Immunogen

Recombinant fusion protein containing a sequence corresponding to amino acids 460-553 of human GLP2R (NP_004237.1).

Synonyms

GLP2R

Contact



www.abclonal.com

Product Information

Source

Rabbit

Isotype

IgG

Purification

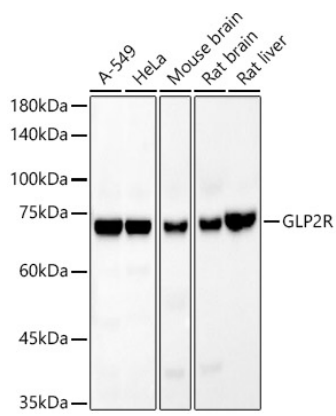
Affinity purification

Storage

Store at -20°C. Avoid freeze / thaw cycles.

Buffer: PBS with 0.05% proclin300,0.05% BSA,50% glycerol,pH7.3.

Validation Data



Western blot analysis of various lysates using GLP2R Rabbit mAb (A22049) at 1:20000 dilution.
Secondary antibody: HRP Goat Anti-Rabbit IgG (H+L) (AS014) at 1:10000 dilution.
Lysates/proteins: 25 μ g per lane.
Blocking buffer: 3% nonfat dry milk in TBST.
Detection: ECL Basic Kit (RM00020).
Exposure time: 90s.