

A22039

Leader in Biomolecular Solutions for Life Science



[KD Validated] Ajuba Rabbit mAb

Catalog No.: A22039 **Recombinant**

Basic Information

Observed MW

55kDa

Calculated MW

57kDa

Category

SMab Recombinant Monoclonal Antibody

Applications

WB,IP,ELISA

Cross-Reactivity

Human,Rat

CloneNo number

ARC54979

Background

Enables alpha-catenin binding activity and transcription corepressor activity. Involved in several processes, including negative regulation of hippo signaling; positive regulation of gene silencing by miRNA; and regulation of cellular response to hypoxia. Acts upstream of or within gene silencing by miRNA and positive regulation of protein-containing complex assembly. Located in several cellular components, including Golgi apparatus; P-body; and nucleoplasm.

Recommended Dilutions

WB 1:2000 - 1:20000

IP 0.5µg-4µg antibody for
200µg-400µg extracts of
whole cells

Immunogen Information

Gene ID

84962

Swiss Prot

Q96IF1

Immunogen

Recombinant fusion protein containing a sequence corresponding to amino acids 201-290 of human Ajuba (NP_116265.1).

Synonyms

JUB; [KD Validated] Ajuba

Contact



www.abclonal.com

Product Information

Source

Rabbit

Isotype

IgG

Purification

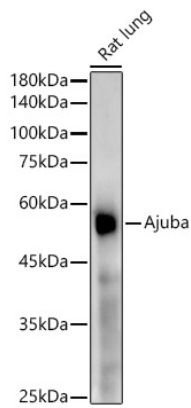
Affinity purification

Storage

Store at -20°C. Avoid freeze / thaw cycles.

Buffer: PBS with 0.05% proclin300,0.05% BSA,50% glycerol,pH7.3.

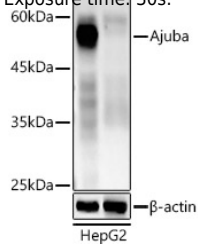
Validation Data



Western blot analysis of lysates from Rat lung using [KD Validated] Ajuba Rabbit mAb (A22039) at 1:20000 dilution.
Secondary antibody: HRP Goat Anti-Rabbit IgG (H+L) (AS014) at 1:10000 dilution.
Lysates/proteins: 25µg per lane.
Blocking buffer: 3% nonfat dry milk in TBST.
Detection: ECL Enhanced Kit (RM00021).
Exposure time: 180s.

Western blot analysis of lysates from wild type (WT) and Ajuba knockdown (KD) HepG2 cells, using [KD Validated] Ajuba Rabbit mAb (A22039) at 1:20000 dilution.

Secondary antibody: HRP Goat Anti-Rabbit IgG (H+L) (AS014) at 1:10000 dilution.
Lysates/proteins: 25µg per lane.
Blocking buffer: 3% nonfat dry milk in TBST.
Detection: ECL Basic Kit (RM00020).
Exposure time: 30s.



Immunoprecipitation analysis of 300 µg extracts of HepG2 cells using 3 µg Ajuba antibody (A22039).
Western blot was performed from the immunoprecipitate using Ajuba (A22039) at a dilution of 1:10000.

