

A22035

Leader in Biomolecular Solutions for Life Science



# PDGFB Rabbit mAb

Catalog No.: A22035 **Recombinant**

## Basic Information

### Observed MW

35kDa

### Calculated MW

27kDa

### Category

SMab Recombinant Monoclonal Antibody

### Applications

WB,IHC-P,IF/ICC,ELISA

### Cross-Reactivity

Human,Mouse,Rat

### CloneNo number

ARC53712

## Background

This gene encodes a member of the protein family comprised of both platelet-derived growth factors (PDGF) and vascular endothelial growth factors (VEGF). The encoded preproprotein is proteolytically processed to generate platelet-derived growth factor subunit B, which can homodimerize, or alternatively, heterodimerize with the related platelet-derived growth factor subunit A. These proteins bind and activate PDGF receptor tyrosine kinases, which play a role in a wide range of developmental processes. Mutations in this gene are associated with meningioma. Reciprocal translocations between chromosomes 22 and 17, at sites where this gene and that for collagen type 1, alpha 1 are located, are associated with dermatofibrosarcoma protuberans, a rare skin tumor. Alternative splicing results in multiple transcript variants.

## Recommended Dilutions

<b>WB</b>	1:2000 - 1:20000
<b>IHC-P</b>	1:200 - 1:2000
<b>IF/ICC</b>	1:200-1:800
<b>ELISA</b>	Recommended starting concentration is 1 µg/mL. Please optimize the concentration based on your specific assay requirements.

## Immunogen Information

<b>Gene ID</b>	<b>Swiss Prot</b>
5155	P01127

### Immunogen

A synthetic peptide corresponding to a sequence within amino acids 142-241 of human PDGFB (NP\_002599.1).

### Synonyms

SIS; SSV; IBGC5; PDGF2; c-sis; PDGF-2; PDGFB

## Product Information

<b>Source</b>	<b>Isotype</b>	<b>Purification</b>
Rabbit	IgG	Affinity purification

### Storage

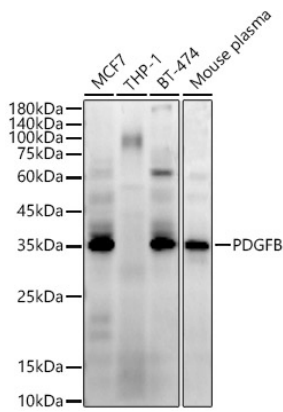
Store at -20°C. Avoid freeze / thaw cycles.

Buffer: PBS with 0.05% proclin300,0.05% BSA,50% glycerol,pH7.3.

## Contact

 [www.abclonal.com](http://www.abclonal.com)

## Validation Data



Western blot analysis of various lysates using PDGFB Rabbit mAb (A22035) at 1:20000 dilution.

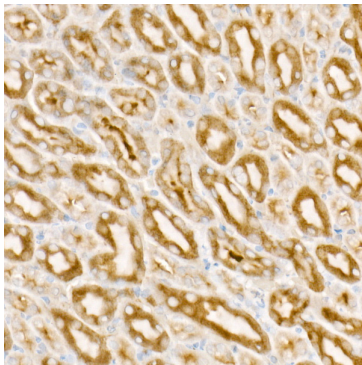
Secondary antibody: HRP-conjugated Goat anti-Rabbit IgG (H+L) (AS014) at 1:10000 dilution.

Lysates/proteins: 25µg per lane.

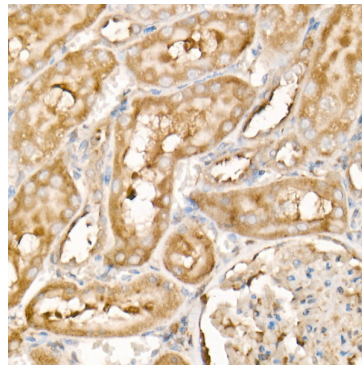
Blocking buffer: 3% nonfat dry milk in TBST.

Detection: ECL Enhanced Kit (RM00021).

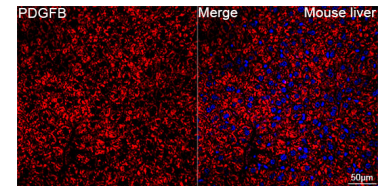
Exposure time: 60s.



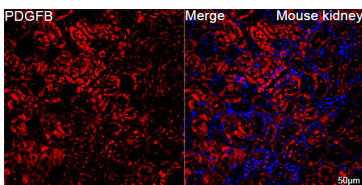
Immunohistochemistry analysis of paraffin-embedded Mouse kidney using PDGFB Rabbit mAb (A22035) at dilution of 1:200 (40x lens). High pressure antigen retrieval performed with 0.01M Citrate Buffer (pH 6.0) prior to IHC staining.



Immunohistochemistry analysis of paraffin-embedded Rat kidney using PDGFB Rabbit mAb (A22035) at dilution of 1:200 (40x lens). High pressure antigen retrieval performed with 0.01M Citrate Buffer (pH 6.0) prior to IHC staining.



Confocal imaging of paraffin-embedded Mouse liver tissue using PDGFB Rabbit mAb (A22035, dilution 1:200) followed by a further incubation with Cy3 Goat Anti-Rabbit IgG (H+L) (AS007, dilution 1:500) (Red). DAPI was used for nuclear staining (Blue). High pressure antigen retrieval performed with 0.01M Citrate Buffer (pH 6.0) prior to IF staining. Objective: 40x.



Confocal imaging of paraffin-embedded Mouse kidney tissue using PDGFB Rabbit mAb (A22035, dilution 1:200) followed by a further incubation with Cy3 Goat Anti-Rabbit IgG (H+L) (AS007, dilution 1:500) (Red). DAPI was used for nuclear staining (Blue). High pressure antigen retrieval performed with 0.01M Citrate Buffer (pH 6.0) prior to IF staining. Objective: 40x.

## Validation Data

---

staining (Blue). High pressure antigen  
retrieval performed with 0.01M  
Citrate Buffer (pH 6.0) prior to IF  
staining. Objective: 40x.