

A21948

Leader in Biomolecular Solutions for Life Science



MICU1 Rabbit pAb

Catalog No.: A21948

2 Publications

Basic Information

Observed MW

46kDa

Calculated MW

54kDa

Category

Polyclonal Antibody

Applications

WB,ELISA

Cross-Reactivity

Human,Mouse,Rat

Background

This gene encodes an essential regulator of mitochondrial Ca²⁺ uptake under basal conditions. The encoded protein interacts with the mitochondrial calcium uniporter, a mitochondrial inner membrane Ca²⁺ channel, and is essential in preventing mitochondrial Ca²⁺ overload, which can cause excessive production of reactive oxygen species and cell stress. Alternatively spliced transcript variants encoding different isoforms have been described.

Recommended Dilutions

WB 1:100 - 1:500

ELISA Recommended starting concentration is 1 µg/mL. Please optimize the concentration based on your specific assay requirements.

Immunogen Information

Gene ID

10367

Swiss Prot

Q9BPX6

Immunogen

Recombinant protein (or fragment). This information is considered to be commercially sensitive.

Synonyms

CALC; EFHA3; MPXPS; CBARA1; ara CALC; MICU1

Contact



www.abclonal.com

Product Information

Source

Rabbit

Isotype

IgG

Purification

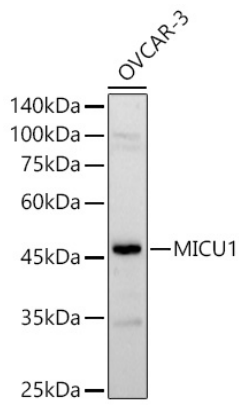
Affinity purification

Storage

Store at -20°C. Avoid freeze / thaw cycles.

Buffer: PBS containing 50% glycerol, preserved with proclin300 or sodium azide (as specified on the Certificate of Analysis), pH 7.3.

Validation Data



Western blot analysis of various lysates, using MICU1 Rabbit pAb (A21948) at 1:500 dilution.
Secondary antibody: HRP-conjugated Goat anti-Rabbit IgG (H+L) (AS014) at 1:10000 dilution.
Lysates/proteins: 25µg per lane.
Blocking buffer: 3% nonfat dry milk in TBST.
Detection: ECL Enhanced Kit (RM00021).
Exposure time: 60s.