

A21889

Leader in Biomolecular Solutions for Life Science



## $\beta$ III-Tubulin Mouse mAb

Catalog No.: A21889

### Basic Information

#### Observed MW

Refer to figures

#### Calculated MW

50kDa

#### Category

Monoclonal Antibody

#### Applications

WB,IF/ICC,ELISA

#### Cross-Reactivity

Human,Mouse,Rat

#### CloneNo number

AMC0106

### Background

This gene encodes a class III member of the beta tubulin protein family. Beta tubulins are one of two core protein families (alpha and beta tubulins) that heterodimerize and assemble to form microtubules. This protein is primarily expressed in neurons and may be involved in neurogenesis and axon guidance and maintenance. Mutations in this gene are the cause of congenital fibrosis of the extraocular muscles type 3. Alternate splicing results in multiple transcript variants. A pseudogene of this gene is found on chromosome 6.

### Recommended Dilutions

**WB** 1:1000 - 1:5000

**IF/ICC** 1:50 - 1:200

**ELISA** Recommended starting concentration is 1  $\mu$ g/mL. Please optimize the concentration based on your specific assay requirements.

### Immunogen Information

#### Gene ID

10381

#### Swiss Prot

Q13509

#### Immunogen

Recombinant fusion protein containing a sequence corresponding to amino acids 40-260 of human  $\beta$ III-Tubulin (Q13509).

#### Synonyms

CDCBM; FEOM3; TUBB4; CDCBM1; CFEOM3; beta-4; CFEOM3A;  $\beta$ III-Tubulin

### Contact



[www.abclonal.com](http://www.abclonal.com)

### Product Information

#### Source

Mouse

#### Isotype

IgG2a,Kappa

#### Purification

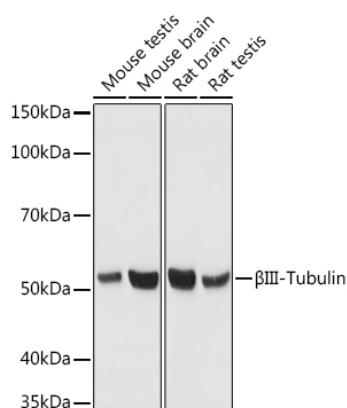
Affinity purification

#### Storage

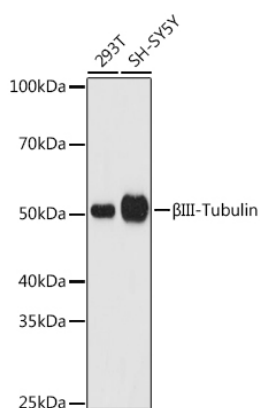
Store at -20°C. Avoid freeze / thaw cycles.

Buffer: PBS with 0.05% proclin300,50% glycerol,pH7.3.

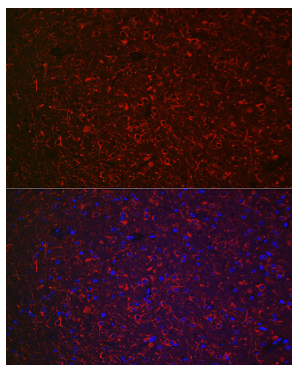
## Validation Data



Western blot analysis of various lysates using  $\beta$ III-Tubulin Mouse mAb (A21889) at 1:3000 dilution.  
Secondary antibody: HRP-conjugated Goat anti-Mouse IgG (H+L) (AS003) at 1:10000 dilution.  
Lysates/proteins: 25 $\mu$ g per lane.  
Blocking buffer: 3% nonfat dry milk in TBST.  
Detection: ECL Basic Kit (RM00020).  
Exposure time: 1s.



Western blot analysis of various lysates using  $\beta$ III-Tubulin Mouse mAb (A21889) at 1:3000 dilution.  
Secondary antibody: HRP-conjugated Goat anti-Mouse IgG (H+L) (AS003) at 1:10000 dilution.  
Lysates/proteins: 25 $\mu$ g per lane.  
Blocking buffer: 3% nonfat dry milk in TBST.  
Detection: ECL Basic Kit (RM00020).  
Exposure time: 180s.



Immunofluorescence analysis of paraffin-embedded mouse brain using  $\beta$ III-Tubulin/ $\beta$ 3-Tubulin Mouse mAb (A21889) at dilution of 1:100 (40x lens). Blue: DAPI for nuclear staining.