

A21778

Leader in Biomolecular Solutions for Life Science



# RHOT1/MIRO1 Rabbit pAb

Catalog No.: A21778

## Basic Information

---

### Observed MW

75kDa

### Calculated MW

71kDa

### Category

Polyclonal Antibody

### Applications

WB,ELISA

### Cross-Reactivity

Human,Mouse,Rat

## Background

---

Predicted to enable GTP binding activity and GTPase activity. Involved in cellular homeostasis; mitochondrial outer membrane permeabilization; and mitochondrion transport along microtubule. Is integral component of mitochondrial outer membrane.

## Recommended Dilutions

---

**WB** 1:100 - 1:500

**ELISA** Recommended starting concentration is 1 µg/mL. Please optimize the concentration based on your specific assay requirements.

## Immunogen Information

---

### Gene ID

55288

### Swiss Prot

Q8IXI2

### Immunogen

Recombinant protein (or fragment). This information is considered to be commercially sensitive.

### Synonyms

ARHT1; MIRO1; MIRO-1; RHOT1/MIRO1

## Contact

---

 [www.abclonal.com](http://www.abclonal.com)

## Product Information

---

### Source

Rabbit

### Isotype

IgG

### Purification

Affinity purification

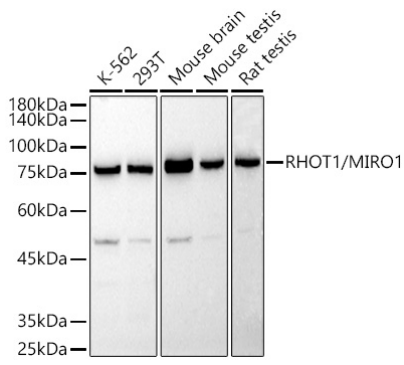
### Storage

Store at -20°C. Avoid freeze / thaw cycles.

Buffer: PBS containing 50% glycerol, preserved with proclin300 or sodium azide (as specified on the Certificate of Analysis), pH 7.3.

## Validation Data

---



Western blot analysis of various lysates using RHOT1/MIRO1 Rabbit pAb (A21778) at 1:500 dilution.

Secondary antibody: HRP-conjugated Goat anti-Rabbit IgG (H+L) (AS014) at 1:10000 dilution.

Lysates/proteins: 25 $\mu$ g per lane.

Blocking buffer: 3% nonfat dry milk in TBST.

Detection: ECL Basic Kit (RM00020).

Exposure time: 180s.