

A21750

Leader in Biomolecular Solutions for Life Science



## [KD Validated] G6PD Rabbit pAb

Catalog No.: A21750

### Basic Information

---

**Observed MW**

60kDa

**Calculated MW**

59kDa

**Category**

Polyclonal Antibody

**Applications**

WB,ELISA

**Cross-Reactivity**

Human

### Background

---

This gene encodes glucose-6-phosphate dehydrogenase. This protein is a cytosolic enzyme encoded by a housekeeping X-linked gene whose main function is to produce NADPH, a key electron donor in the defense against oxidizing agents and in reductive biosynthetic reactions. G6PD is remarkable for its genetic diversity. Many variants of G6PD, mostly produced from missense mutations, have been described with wide ranging levels of enzyme activity and associated clinical symptoms. G6PD deficiency may cause neonatal jaundice, acute hemolysis, or severe chronic non-spherocytic hemolytic anemia. Two transcript variants encoding different isoforms have been found for this gene.

### Recommended Dilutions

---

WB 1:500 - 1:1000

### Immunogen Information

---

**Gene ID**

2539

**Swiss Prot**

P11413

**Immunogen**

Recombinant fusion protein containing a sequence corresponding to amino acids 195-515 of human G6PD (NP\_001035810.1).

**Synonyms**

G6PD1; [KD Validated] G6PD

### Contact

---

 [www.abclonal.com](http://www.abclonal.com)

### Product Information

---

**Source**

Rabbit

**Isotype**

IgG

**Purification**

Affinity purification

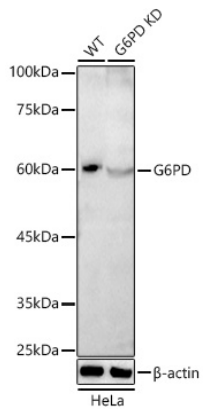
**Storage**

Store at -20°C. Avoid freeze / thaw cycles.

Buffer: PBS with 0.05% proclin300,50% glycerol,pH7.3.

## Validation Data

---



Western blot analysis of extracts from wild type(WT) and G6PD knockdown (KD) HeLa cells, using G6PD antibody (A21750) at 1:1000 dilution.  
Secondary antibody: HRP Goat Anti-Rabbit IgG (H+L) (AS014) at 1:10000 dilution.  
Lysates/proteins: 25 $\mu$ g per lane.  
Blocking buffer: 3% nonfat dry milk in TBST.  
Detection: ECL Basic Kit (RM00020).  
Exposure time: 180s.